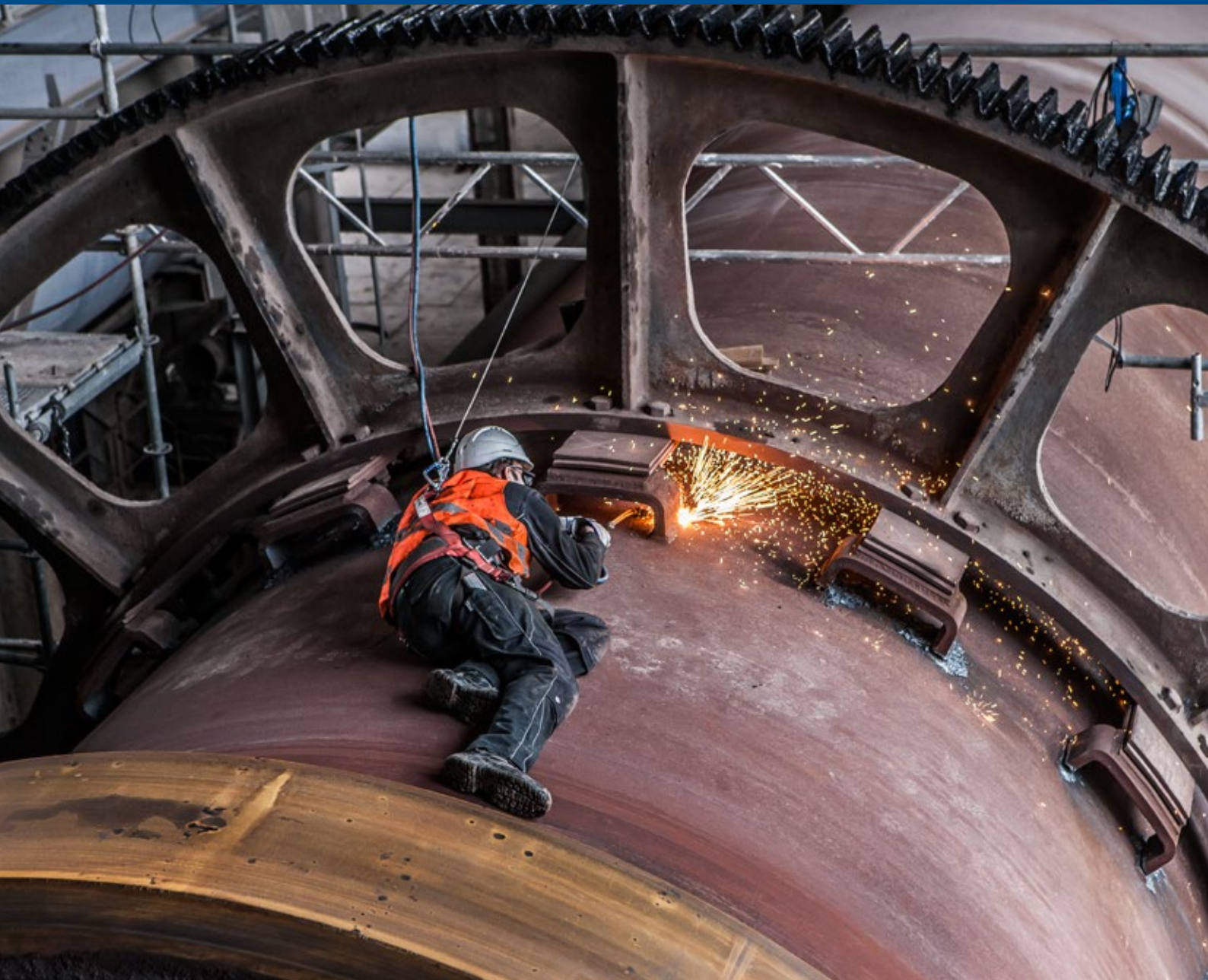


On-site services for girth gears



FLSmidth provides expertise to supply, install, maintain and repair heavy-duty girth gears to help ensure years of reliable operation.

Complete service solutions for girth gears

Engineering and planning of maintenance projects

FLSmidth can provide on-site evaluations to:

- Define the job scope and welding procedure
- Specify needed resources such as cranes, tools, and manpower
- Detail the project schedule to ensure a smooth and efficient turnkey project execution.

Installation services

For kiln and ball mills, we offer services on open girth gears:

- Delivery and replacement of shell sections below girth gears
- Delivery and installation of girth gear, pinion, fixation system and drives
- Change or reversal and alignment of girth gear, pinions and drives.

Repair and refurbishment

Our repair and refurbishment team provides hands-on gear service including:

- Temporary repairs of crack and wear on girth gear and pinion
- Ball mill flange runout machining.

Inspection services

Beside the visual inspection of girth gears we also apply:

- Radial and axial runout
- Root clearance and backlash measurement
- Pitch measurement
- Shell and fixation system for kilns
- Mounting flange measurement for ball mills
- Temperature and vibration measurements
- NDT measurements.

Customised solutions

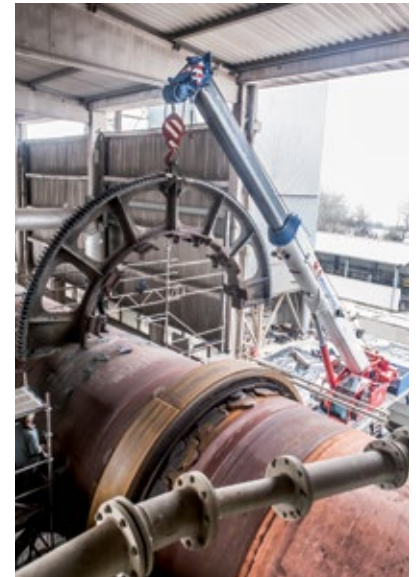
In addition to the above capabilities, FLSmidth offers a single source for a complete range of services – ranging from feasibility studies and condition monitoring to engineering, spare parts supply and installation – to match the specific needs of your plant.

Production

FLSmidth MAAG Gear has its own manufacturing facilities for girth gears.



Cutting of kiln shell



Lift of upper half of girth gear



SCAN HERE

TO VIEW A SHORT VIDEO
OF A GIRTH GEAR BEING
LIFTED ON-SITE

Contact information

Find your local supplier at www.flsmidth.com/onsiteservices

www.flsmidth.com