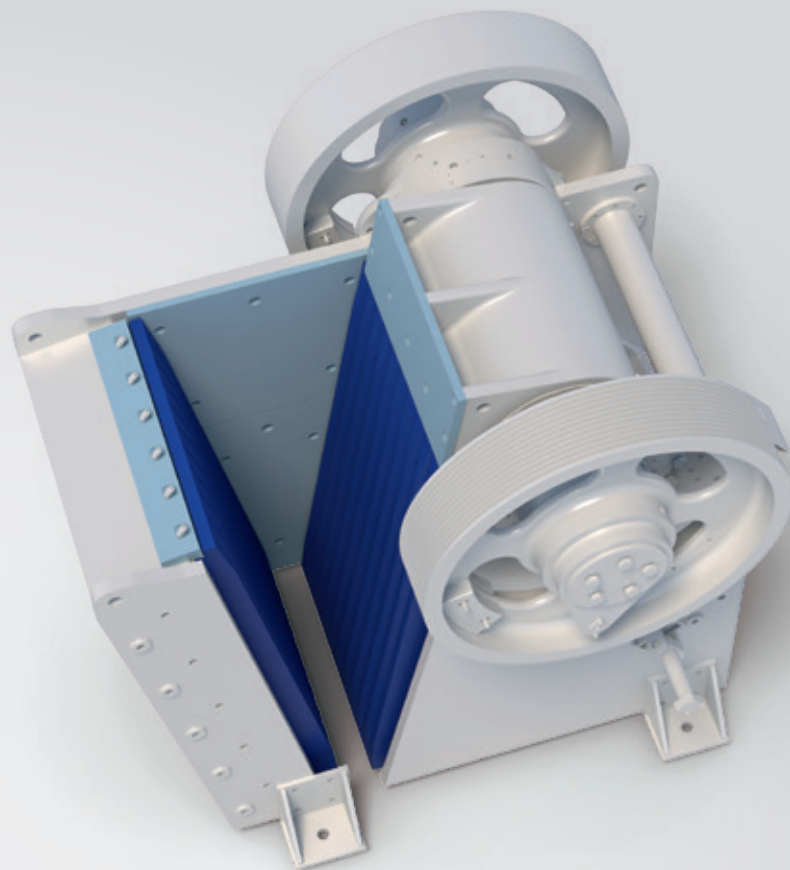


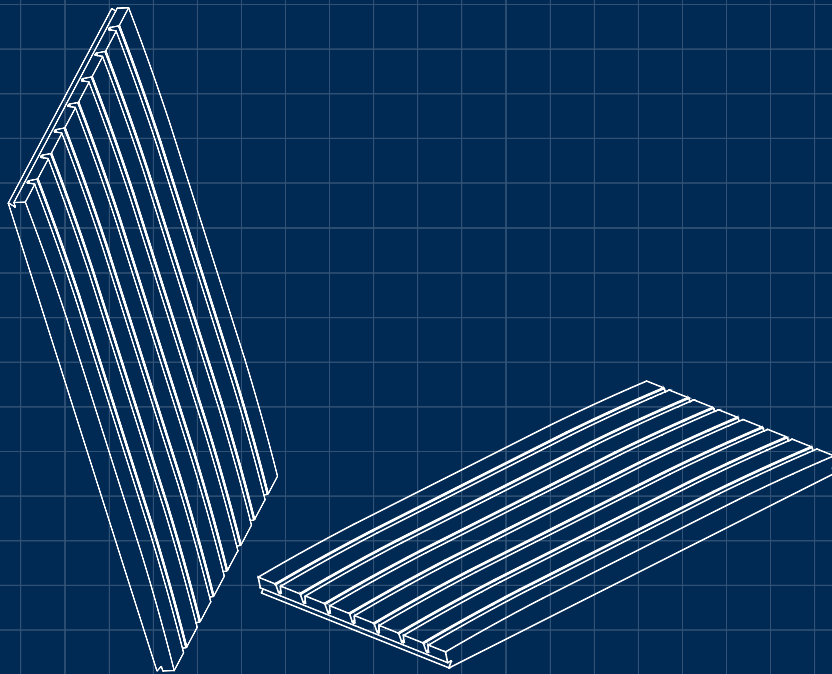
# Jaw crusher liners

High-quality jaw  
and cheek plates



# Genuine partnership in wear parts

We deliver significant benefits beyond high-quality jaw crusher liners. How? By working closely with you, our experts provide productivity expertise; professional, in-depth equipment knowledge and a comprehensive approach to improving your processes.



## Key benefits

■  
Increased  
capacity

■  
Reduces  
inventory

■  
Increased  
uptime

■  
High-quality  
materials

■  
Reduced  
OPEX

■  
Improved  
wear life

# Expert supported, reliable solutions

At FLSmidth, we know our customers look for wear liners that are proven to work for their applications and create maximum productivity. Our jaw crusher liner expertise and high-quality materials are key to creating an optimised crushing solution.

## Reliable, high-quality OEM wear parts

It is unavoidable that over time, wear parts will need to be replaced. Our certified wear parts are of the highest quality and are designed to maximise your productivity.

## Wear material that increases productivity

Austenitic manganese steel is the industry standard material for jaw crusher liners. Due to its ability to work-harden during operation, it has proven to be versatile, and works well in a majority of applications.

We offer three standard grades for jaw crusher liners, allowing you to quickly address changing ore characteristics. By varying the chemical composition of our different material grades, you will achieve an increase in productivity. Our SM310 and SM330 materials perform well for average abrasive ore types, while more abrasive ores typically benefit from HM830 wear materials.

## Wear materials for typical applications

Typical Applications	Jaw Plates	Wear Plates
Low-abrasion feed	SM310	AR Plate
Medium-abrasion feed	SM330	AR Plate
High-abrasion feed	HM830	Alloy Plate

## Customisation solutions

- Crushing chamber optimisation
- Process optimisation
- Repair and service contracts
- Safety and maintenance tools

## Accessory components

- Cheek plates
- Liner retaining wedges and holders
- Mounting hardware
- Swing jaw plates

### Corrugated

- Medium abrasion index ore
- Good top size control
- Soft to medium strength ore



### High wear

- High abrasion index ore
- Non-critical top size control
- Soft to hard strength ore



### High grip

- Medium abrasion index ore
- Good top size control
- Good grip with slippery ore
- Soft to medium strength ore



**Minerals Technology Center**

FLSmidth USA Inc.

7158 S. FLSmidth Drive

Midvale, UT 84047-5559

USA

Tel: +1 801 871 7000

Fax: +1 801 871 7001

E-mail: [info.miningliners@flsmidth.com](mailto:info.miningliners@flsmidth.com)

For more locations and contact details go to

[www.flsmidthminerals.com/contact](http://www.flsmidthminerals.com/contact)



[flsmidth.com/linkedin](http://flsmidth.com/linkedin)



[flsmidth.com/twitter](http://flsmidth.com/twitter)



[flsmidth.com/facebook](http://flsmidth.com/facebook)



[flsmidth.com/instagram](http://flsmidth.com/instagram)



[flsmidth.com/youtube](http://flsmidth.com/youtube)