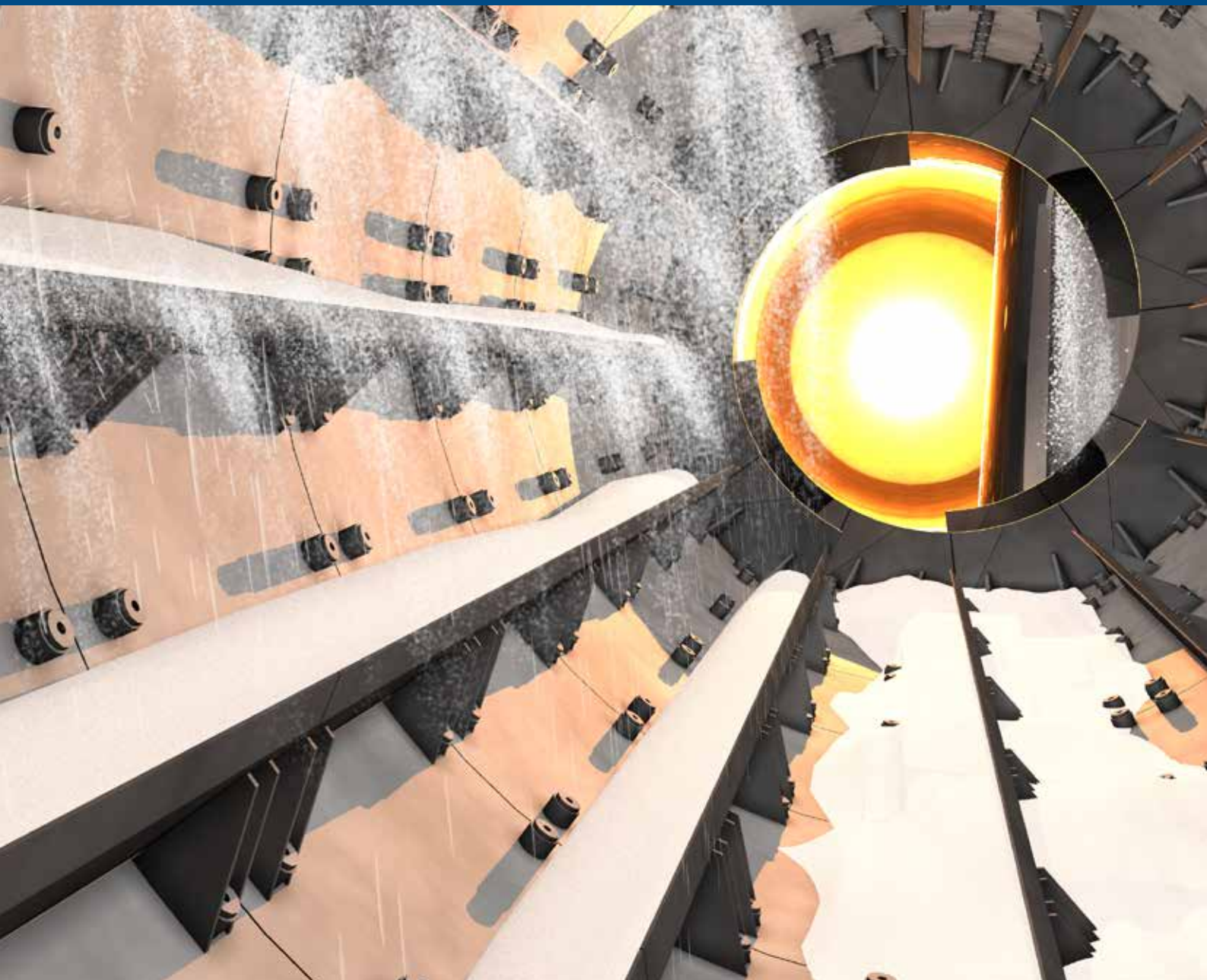
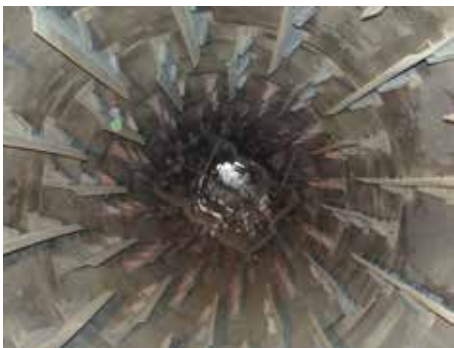
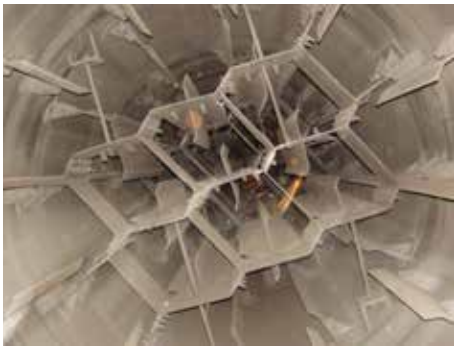
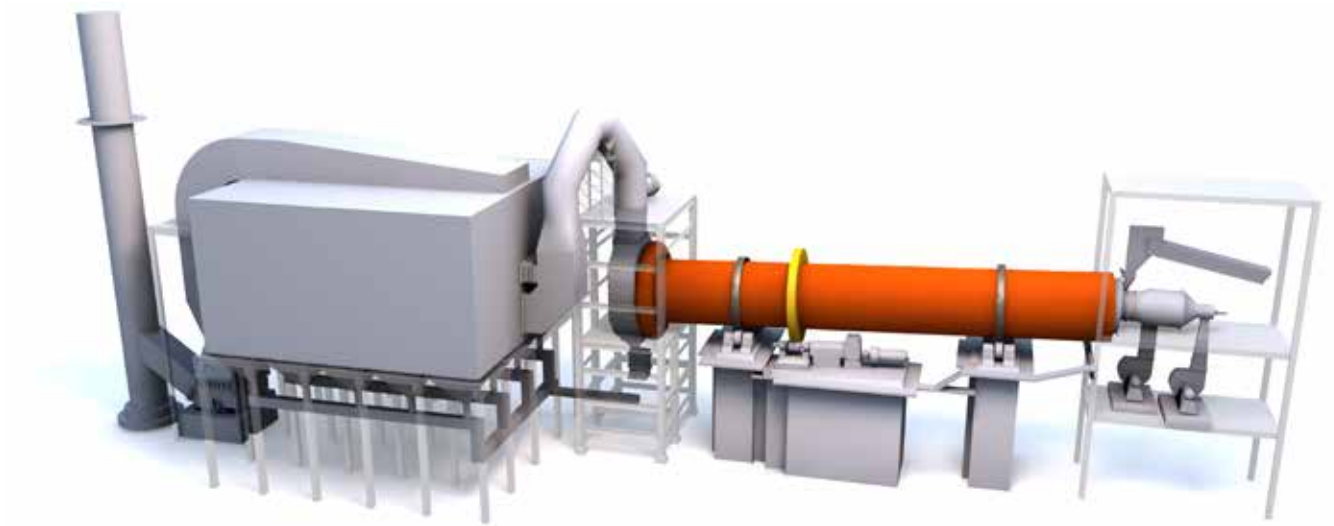


One Source

Minerals Rotary Dryer Systems



FT Series Rotary Dryers



FLSmidth is known for its rugged, dependable product and system offerings. In line with this tradition, and in an effort to support today's fast track delivery schedules, FLSmidth has developed a standardized series of rotary dryers known as the FT Series Rotary Dryers. The FT Series Rotary Dryers have been designed in standard sizes between 3.0 and 6.0 meters in diameter. These standardized designs provide quick turnaround for approval documents and improved equipment deliveries as well as increased parts availability. We also offer larger and intermediate sizes to suit the process requirements. Contact us and we'll help you select the rotary dryer that best suits your specific application.

Systems features:

- Designed for processing a wide variety of materials; nickel ore, soda ash, phosphate, bauxite, sand, petroleum coke, and many other minerals at moisture contents up to 50%

- Co-current or counter-current flow systems are available

Drive components:

- Gear and pinion are reversible so that both flanks of the teeth can be utilized for longer life
- Forged pinion mounted on an extended reducer shaft for sizes from 3.0 to 3.8 m diameter. Forged pinion with integral shaft for sizes larger than 3.8 m diameter
- Automatic gear and pinion spray lubrication system.
- Fully enclosed gear guard for maximum protection
- Grease lubricated spherical roller support bearings designed for 80,000 hour of L_{10} life

Dryer shell and internals

- Shell is fabricated from ASTM A-36 carbon steel. Riding ring sections are made of heavier plate than the balance of the shell.
- Internal lifters shower the material for maximum drying and heat



transfer. The internals (starting from the feed end) consist of: feed advancing spirals to minimize backpilling, straight lifters bolted to angle brackets which are welded to the shell, and a section of bare shell at the discharge end to minimize dust entrainment

- Overlapping spring plate seals on both ends of the dryer minimize air infiltration
- Support rollers are made of high-grade forged steel and are integral with the shafts
- Greased lubricated spherical roller support bearings are designed for 80,000 hours of L_{10} life
- Full thrust is included. The downhill thrust roller is designed to take the full downhill thrust

Gas treatment

Air pollution control system options; electrostatic precipitators (ESP), baghouses, wet scrubbers or multi-clone collectors.

Your choice of fuel

Many types of fuels are being used successfully in commercial operations including natural gas, fuel oil, coal, petroleum coke, low heating value gases and alternative fuels.



Rotary dryer standard sizes

Diameter Meters	Length Meters	Typical Capacity MTPH	Motor Size	
			Kw	HP
3.0	21.0	130	112	150
3.2	22.4	160	130	175
3.4	23.8	190	149	200
3.6	25.2	230	186	250
3.8	26.6	270	223	300
4.0	28.0	310	261	350
4.2	29.4	360	298	400
4.4	30.8	410	335	450
4.6	32.2	470	373	500
4.8	33.6	540	447	600
5.0	35.0	610	484	650
5.2	36.4	675	522	700
5.4	37.8	760	560	750
5.6	39.2	850	634	850
5.8	40.6	940	671	900
6.0	42.0	1040	708	950

**Large sizes and intermediate sizes also available*

Minerals

Headquarters

FLSmidth USA Inc.
7158 S. FLSmidth Drive
Midvale, UT 84047-5559
Tel: +1 801 871 7000
E-mail: info.sl@flsmidth.com

Pyromet Sales

FLSmidth Inc.
2040 Avenue C
Bethlehem, PA 18017-2188
Tel: +1 610-264-6011
E-mail: info-us@flsmidth.com

