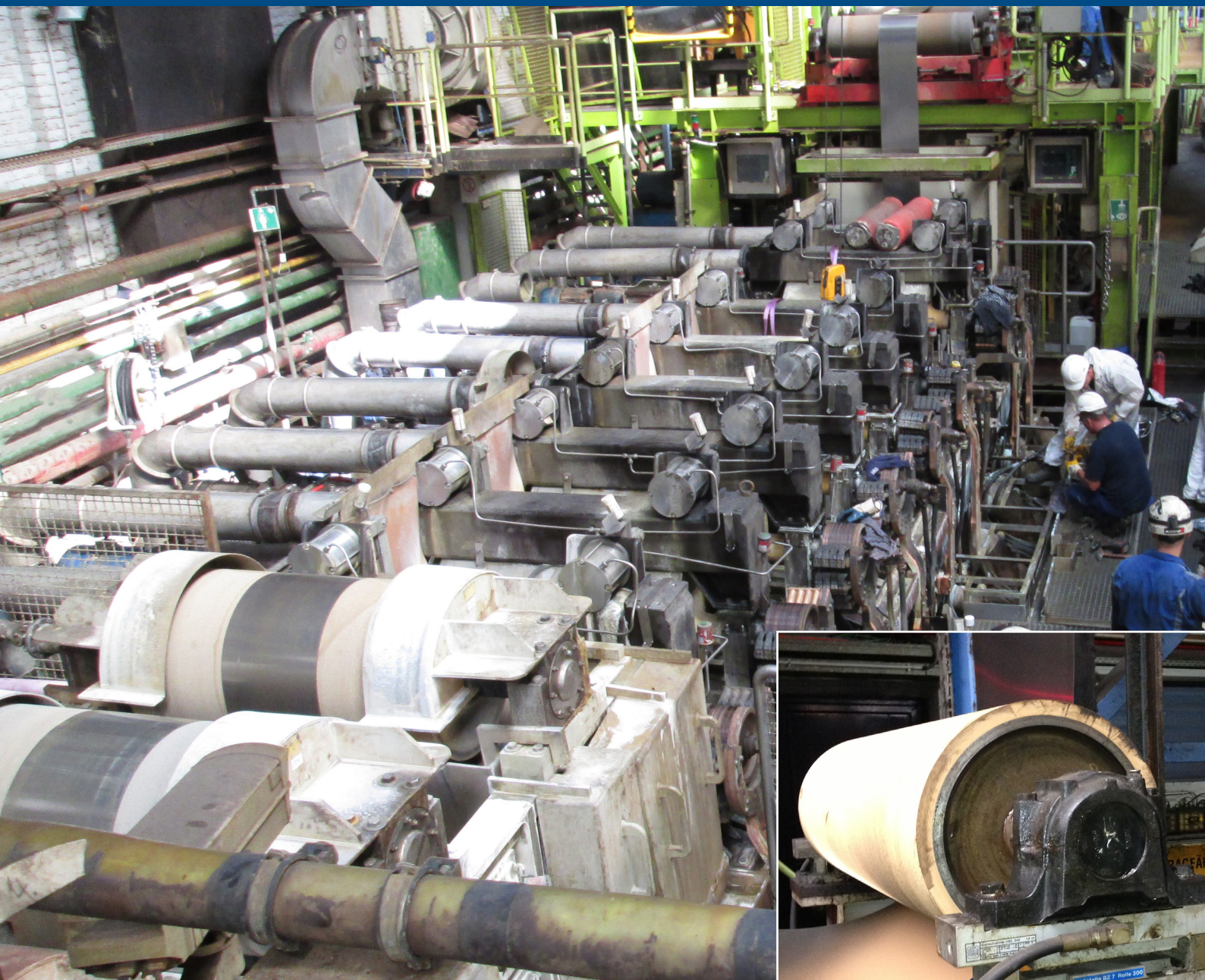


Process Line Measurement On-site services for customer



**Parallelism of process rollers is the basis
for product quality**

Measurement of the roller geometry for optimum process run

What can we measure

Process lines as:

- Coatingline
Paintline, Pickling Line, Continuous Pickling Line
- Side trimmer, Slitting Line, Cut-to-length Line
- Cold Rolling Mill
Thin Strip Rolling Mill, Skin Pass Mill, Roll Stand, Roughing Stand, Tandem Mill, Z-High Mill
- Plastics Product Line
Maker, Extruder, Treatline, Paperline, Punchingline, etc.

- strip control (by steering roller) will be minimised
- improvement of winding quality on reels (Coilline)
- minimisation of the unscheduled shutdowns

Documentation

- clear - numerically / graphically
- of the actual state
- of the optimised state after the adjustment

Period of application

Basically we are directed after the customer default.

In case of an emergency we also react quickly to avoid a longer process line shut down.

Additional possibilities by our specialised personnel

- Adjustment of rollers
- Welding works
- Assembly works
- Thermal analyses, etc.

Experience in process structures is the base for a sensible measurement. In this case, you can trust upon our 25 years of experience.

What we measure

Parallelism of the rollers

- in horizontal position (Line) concerning to operating-sided parallel axis to centre line
- in the vertical position (Level) Local level to roller

Centre position of the rollers oriented to Centre Line

How exactly we are

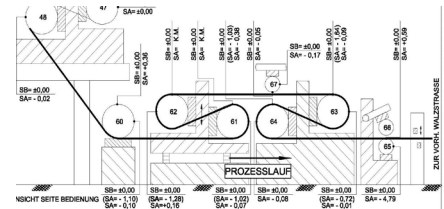
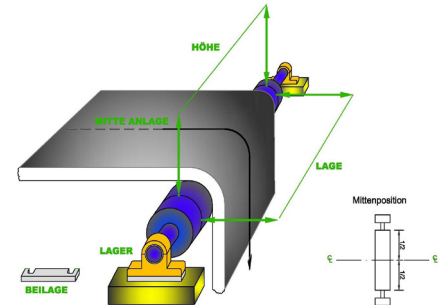
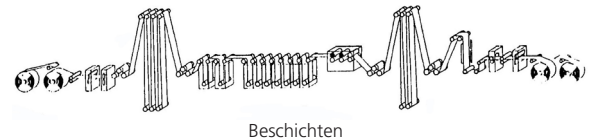
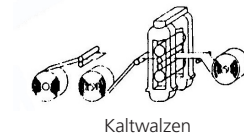
Parallelism to rollers

- reproduceable up to ± 0.03 mm
- after manufacturer's specification (maximum ± 0.03 mm)

What is your benefit

Process optimisation

- improved strip run by direct adjustment
- influence on better product quality
- less corrections by operators necessary



FLSmidth Oelde GmbH

Measurement Department
Borgfeld 1
59302 Oelde
Tel: +49 2529 9494 0
vermessung.oelde@flsmidth.com

www.flsmidth.com

