

FerroCer[®] 22 Impact Wear Panels

FerroCer 22 Impact Wear Panels represent a revolutionary breakthrough in materials technology, allowing for a cost-effective solution that provides better wear life than conventional panels. The unique matrix design of the panel construction combines the strength and malleability of steel with the superior abrasion resistance of ceramics. The result is a lighter-weight, yet stronger wear panel.

Key benefits

Longer uptime at a lower cost

Processing thousands of tons of rock and minerals every day creates abusive conditions for material handling equipment. The unique composition of FerroCer 22 panels takes advantage of the wear characteristics of multiple materials. These extended-wear-life panels not only provide long life, reducing shutdowns to replace them, but their decreased weight reduces the load on your machines for longer overall equipment life. Yet, FerroCer 22 panels generally cost less than half the price of competitors' panels for improved effective service life.

Safer, faster, and easier installation

Weighing only 2.8 kg (6.1 lb) each, FerroCer 22 panels meet all safety regulations for size and weight, and can be lifted by one person. Their compact shape makes them safe and easy to install using only standard hand tools. Each panel attaches using just a single bolt and nut. There is no need for heavy lifting equipment, reducing production downtime. The mounting hole for the bolt is covered with an adhesive-coated ceramic plug. As the assembly wears, the design ensures the ceramic inserts do not come loose.

FerroCer 22

Superior-life wear liners

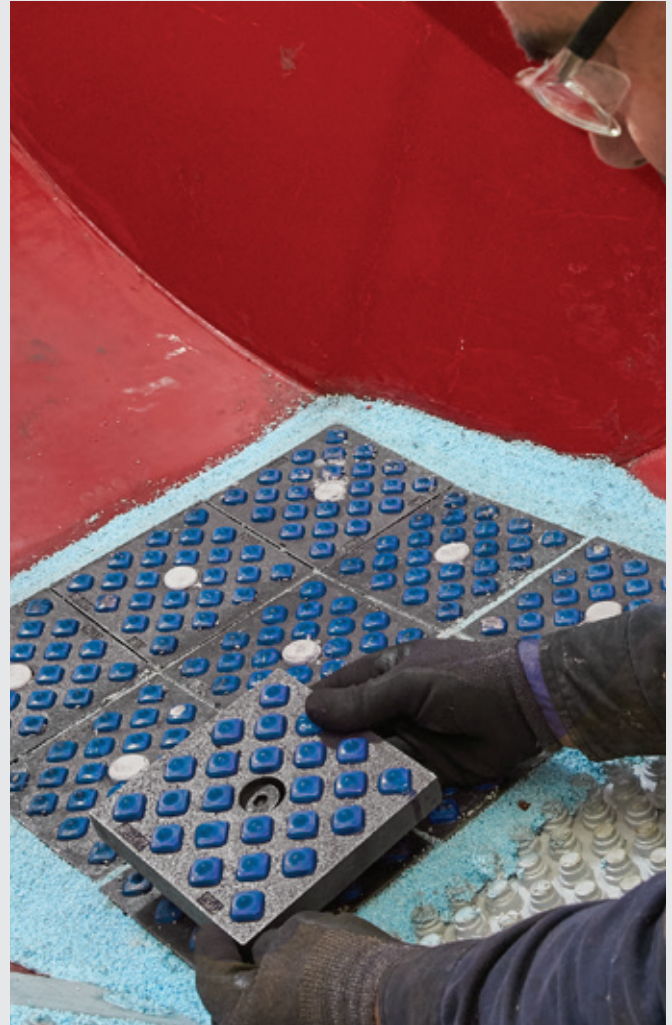
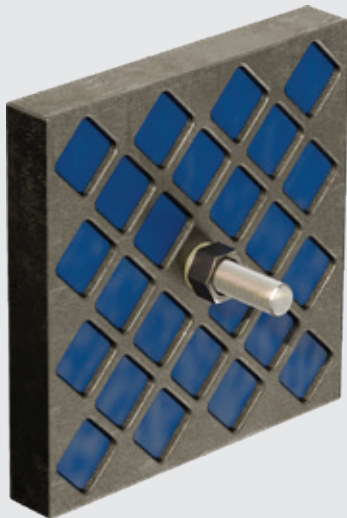
The FerroCer difference

From the moment you install FerroCer, you will dramatically reduce your downtime and operating costs, as you significantly improve your productivity and profitability

Advantages

Patent-pending FerroCer 22 impact technology is the ideal wear liner solution, combining extra-long wear life, ease of installation and affordable pricing. FerroCer 22 provides:

- Decreased unplanned downtime and improved availability
- Increased production and recovery rates
- Reduced maintenance and operating costs
- Improved safety due to size and weight
- Ideal for applications where space and weight are a consideration
- Meets safety regulation for high temperature (up to 250° C) and underground mining installation
- Reduces the load on weight-sensitive equipment
- Modular design allows for inventory commonality
- Lower CO₂ impact from not having to melt and transport as much steel / polymer
- Less waste to dispose of because only worn sections are replaced



Applications

- Chutes
- Hoppers and bins
- Guide and deflector plates
- Feed boxes
- Vibrating screen boxes
- Reclaimer and loader buckets
- Mining and Cement industries

Project Centre Denmark
FLSmidth A/S
Vigerslev Allé 77
DK-2500 Valby
Copenhagen
Tel: +45 3618 1000
Fax: +45 3630 1820
E-mail: info@flsmidth.com

Minerals Technology Center
FLSmidth Inc.
7158 S. FLSmidth Drive
Midvale, UT 84047-5559
USA
Tel: +1 801-871-7000
Fax: +1 801-871-7001
E-mail: info.sl@flsmidth.com

www.flsmidth.com

Copyright © 2019 FLSmidth A/S.
ALL RIGHTS RESERVED. FLSmidth is a (registered) trademark of FLSmidth A/S. This brochure makes no offers, representations or warranties (express or implied), and information and data contained in this brochure are for general reference only and may change at any time.