

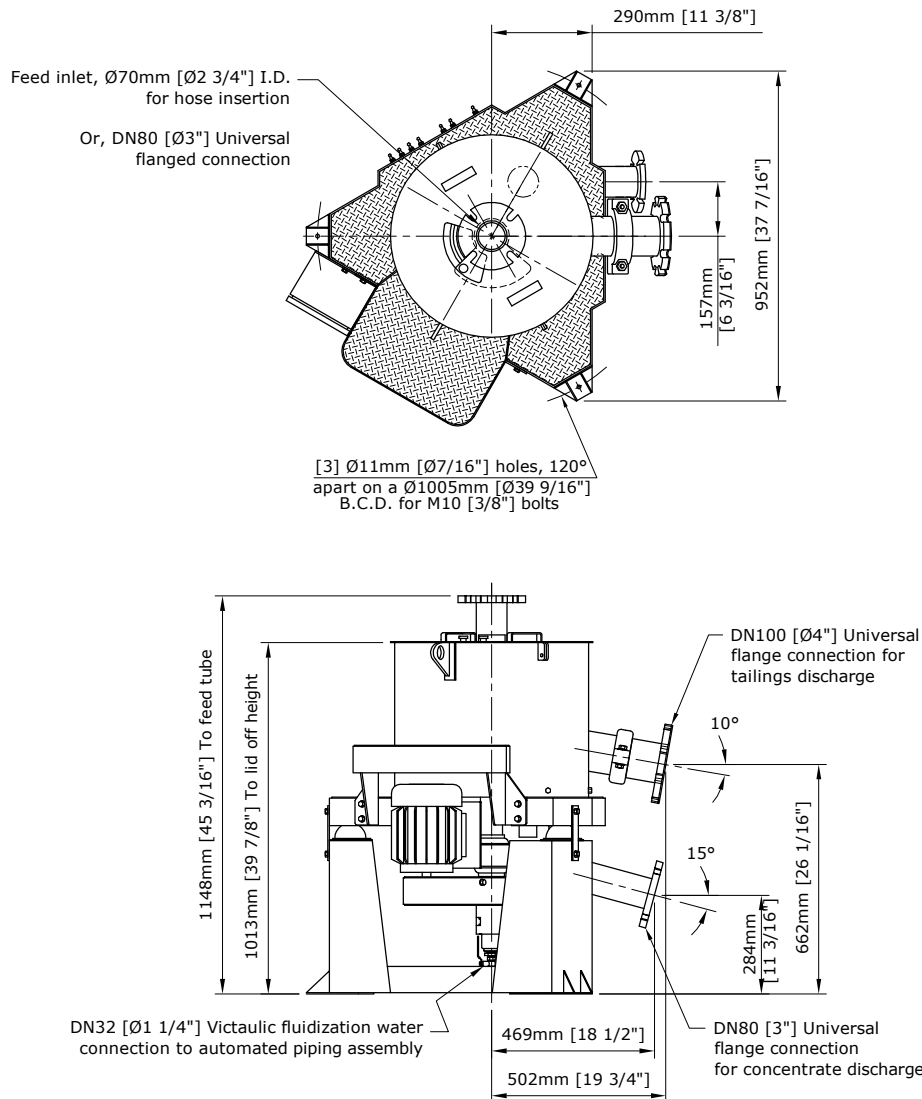


FLSmidth Ltd.
 PO Box 10025, 650-700 West Georgia St.
 Vancouver • British Columbia • Canada • V7Y 1A1
 Tel +1 604 888 4015 • Fax +1 604 888 4013
 Email: knelson@flsmidth.com • www.flsmidth.com

**Knelson Concentrator Model
 KC-CD12
 Specification Sheet**

- Maximum Feed Capacity - 20 tonnes/hr Solids
- Maximum Total Volumetric Throughput - 27 m³/hr [120 USgpm]
- Feed Topsize Size - Maximum: 6mm; Recommended: 2mm
- Feed Density - Up to 75% Solids by Weight
- Max. Fluidization Water Pressure - 550 kPa [80 psi]
- Minimum Air Flow Required (Auto Piping Only) - 150 L_w/min [5.3 scfm] @ 600 kPa [90 psi]
- Concentrator Installation Weight - 295 kg [650 lbs]
- Motor - 1.5 - 3.8 kW [2 - 5 hp] - Electric

Cone Style	Fluidization Water m ³ /hr [USgpm]	Concentrate Weight kg [lb]	Recommended G-Force Operation [G]	Recommended Application
G5	3 [13] - 6 [26]	2.7 [6] - 3.4 [7.6]	60	Fine to coarse target minerals
G6	4 [18] - 8 [35]	5 [11] - 7 [14]	60 - 120	Fine to coarse target minerals
G7	3 [13] - 7 [31]	6 [13] - 9 [19]	60 - 150	Fine and ultra-fine target minerals



Note:
 - Specifications subject to change without notice.
 - All piping to concentrator to be flexible to allow for slight oscillation of unit during operation.
 - Consult FLSmidth for more detailed operating parameters for your specific application.