

Product datasheet

How to get more from your milling circuit

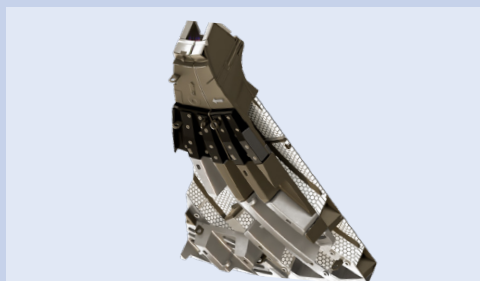
Today's successful mines use more than reliable equipment, they use digital insights that allow them to work smarter. With total lifecycle support services, you are more in tune with your SAG and ball mill and can clearly see how it impacts the productivity of your entire operation.

If your goal is high productivity and maximum peace of mind, partnering with a full-service solutions provider is the only way to reach it. When your milling equipment is connected, monitored, and serviced by our experts, your job becomes significantly easier.

- Our monitoring and reliability strategies help you plan, adjust, and act – before it's too late
- We interpret your data and advise you on best practices

Why choose total lifecycle support:

- Sensors on your mill tell you how it's operating so you know when to make adjustments for optimal throughput
- Monitoring your mill operation and mill liner performance ensures continuous support and opportunities for design improvement
- Better asset health increases throughput, extends your mill's lifetime, and reduces costs related to downtime and maintenance



Superior mill liner designs to continuously optimise your mill productivity

A smart mill liner package that provides maximum productivity to your operation

We're here for you, whether you need light monitoring or close attention. Our support packages are designed to help you optimise efficiency, extend equipment life, and improve your practices. All services are provided by our network of specialists with in-depth experience in the industry.

Condition monitoring

- Online monitoring service
- Level 2 sensors (option)

LoadIQ™ Expert Control

- LoadIQ process optimisation

PulpMax™ liners

- Composite pulp lifters

Shell liners

- Optimised composite or steel liners

Lifecycle services

- LoadIQ data interpretation & process support
- Intermediate or advanced audit
- Mill liner design and optimisation based on LoadIQ data and 3D scanning

Smart liner package

- Higher throughput
- Extended liner life increasing availability
- Reduced power consumption
- Ongoing liner design optimised for maximum throughput
- Lowest sustainability impact

Hardware

- Liner choices
 - Rubber
 - Steel
 - Composite (PulpMax)
- Design for your operation
- LoadIQ sensor
- Level 2 condition monitoring sensors (option)

Software

- ENABLR™
- LoadIQ
- SiteConnect™
- TCO analysis
- Mobile inspection too

Services

- 3D Scanning - monthly wear monitoring
- Audit and TCO analysis
- Mill liner design and optimisation
- LoadIQ data interpretation & process support
- Mill condition monitoring service

FLSmidth A/S
 2500 Valby
 Denmark
 Tel. +45 3618 1000
 info@flsmidth.com

www.flsmidth.com

FLSmidth Inc.
 Salt Lake City Operations,
 UT 84047-5559
 USA
 Tel. +1 801 871 7000
 info.sl@flsmidth.com

Copyright © 2023 FLSmidth A/S. All Rights Reserved. FLSmidth and FLS are (registered) trademarks of FLSmidth A/S. This brochure makes no offers, representations or warranties of any kind (express or implied), and information and data contained in this brochure are for general reference only and may change at any time. FLSmidth does not guarantee or make any representation regarding the use or the results of the information or the data provided in the brochure in terms of its correctness, accuracy, reliability or otherwise, and shall not be liable for any loss or damage of any kind incurred as a result of the use of the information or data provided in the brochure.