

How a cement plant gets off the ground



Peter Krüger, Vice President, FLSmidth

FLS Industries Capital Market Day, 18 January 2005

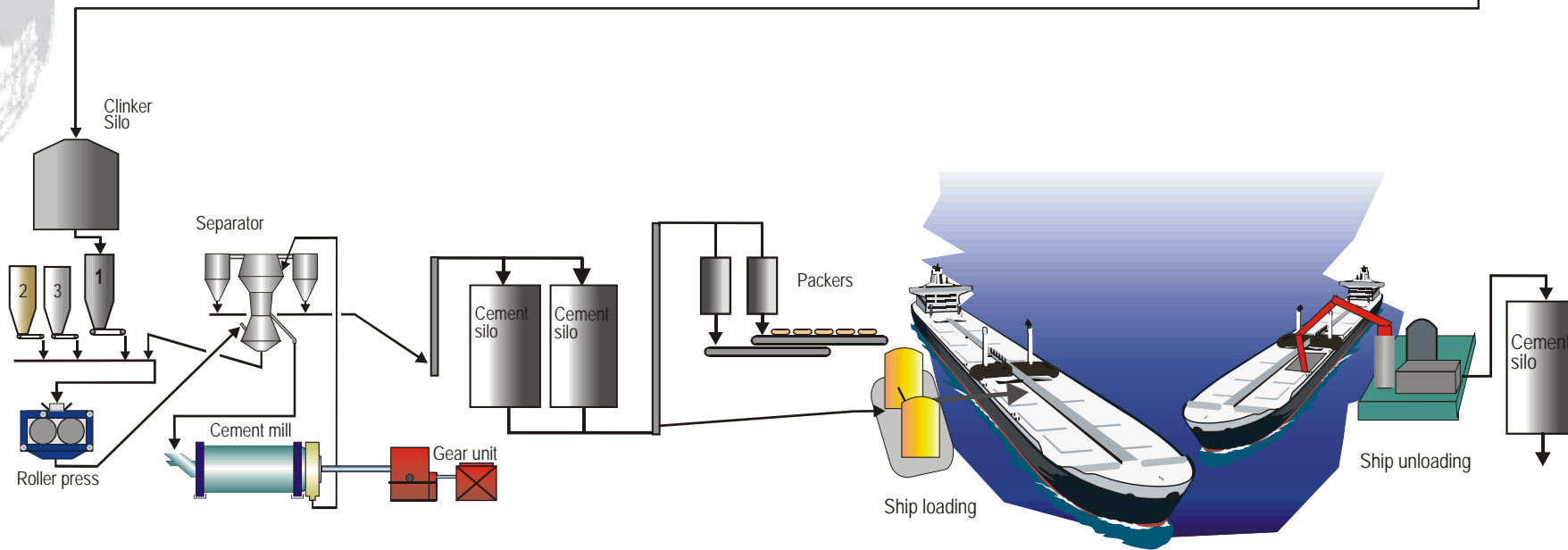
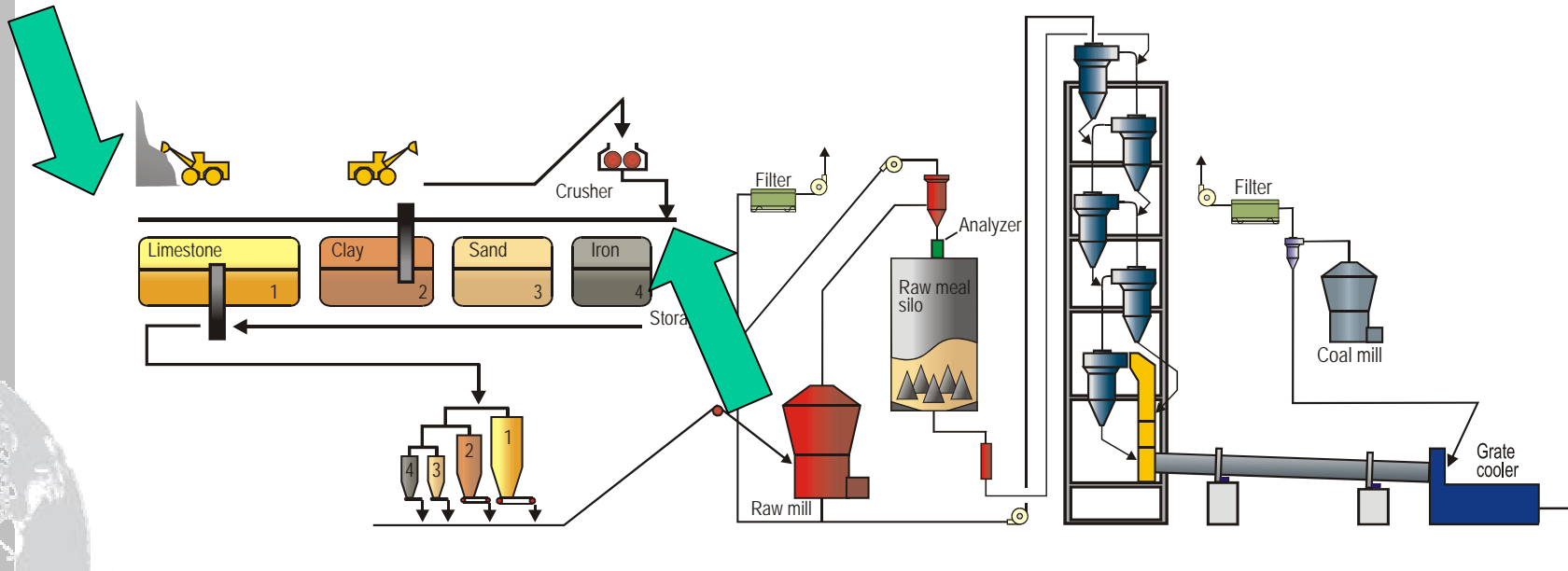


FLSMIDTH

Thailand



FLSMIDTH



Limestone quarry



Limestone loading

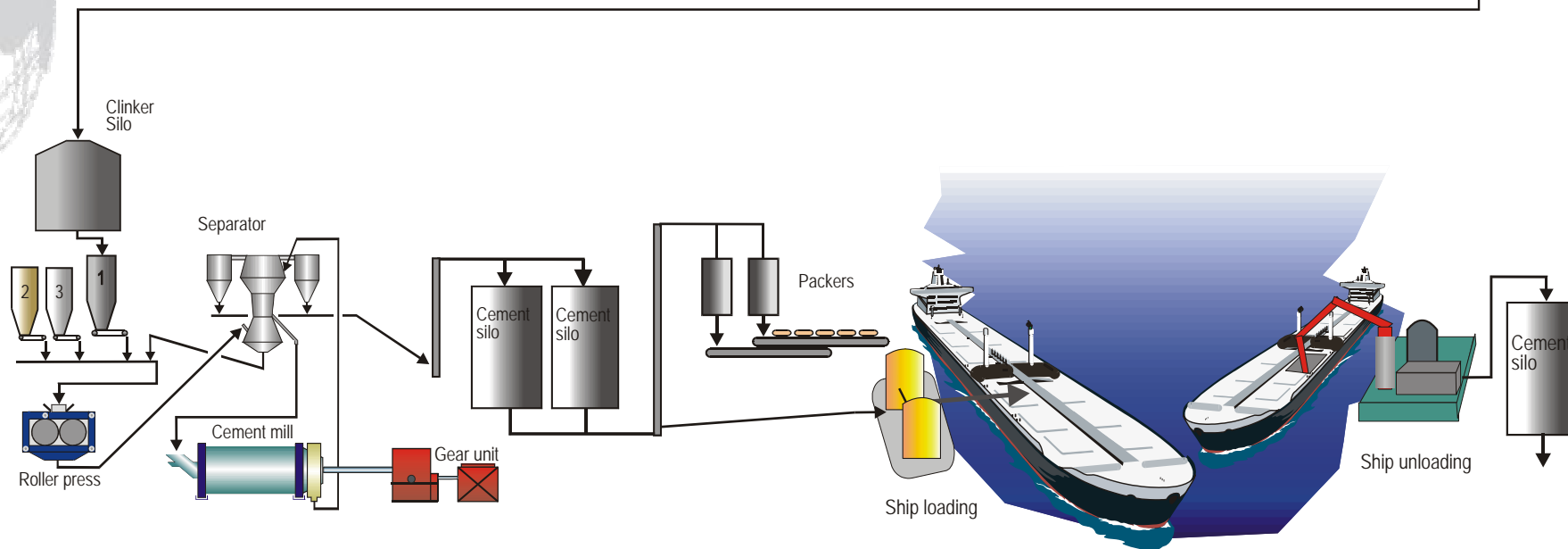
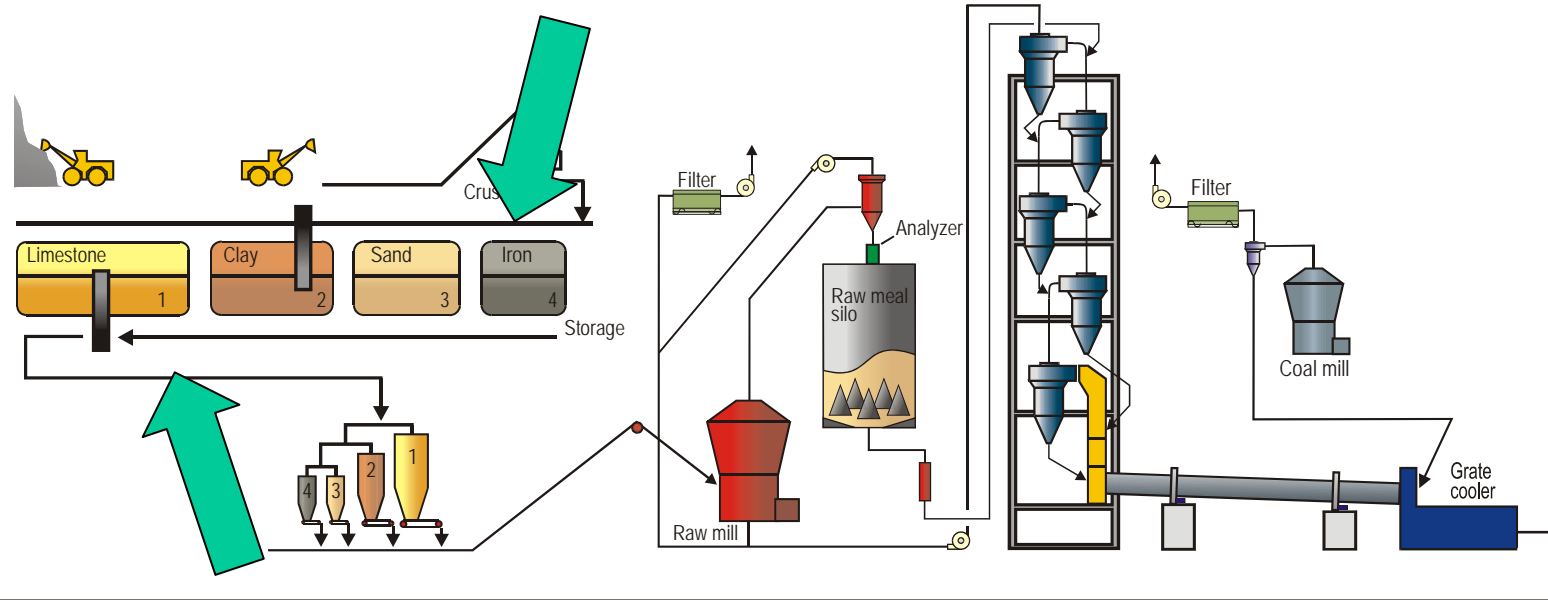


Limestone Crusher



EV Hammer Impact Crusher





CHO Circular Homogenising storages

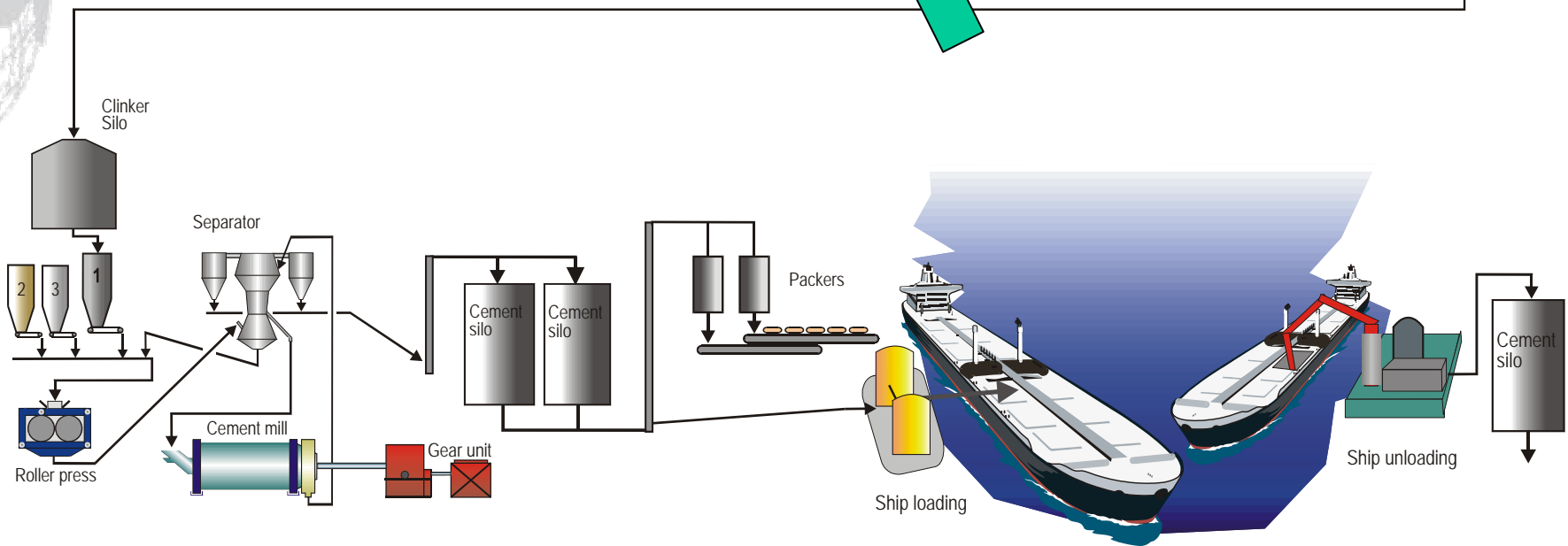
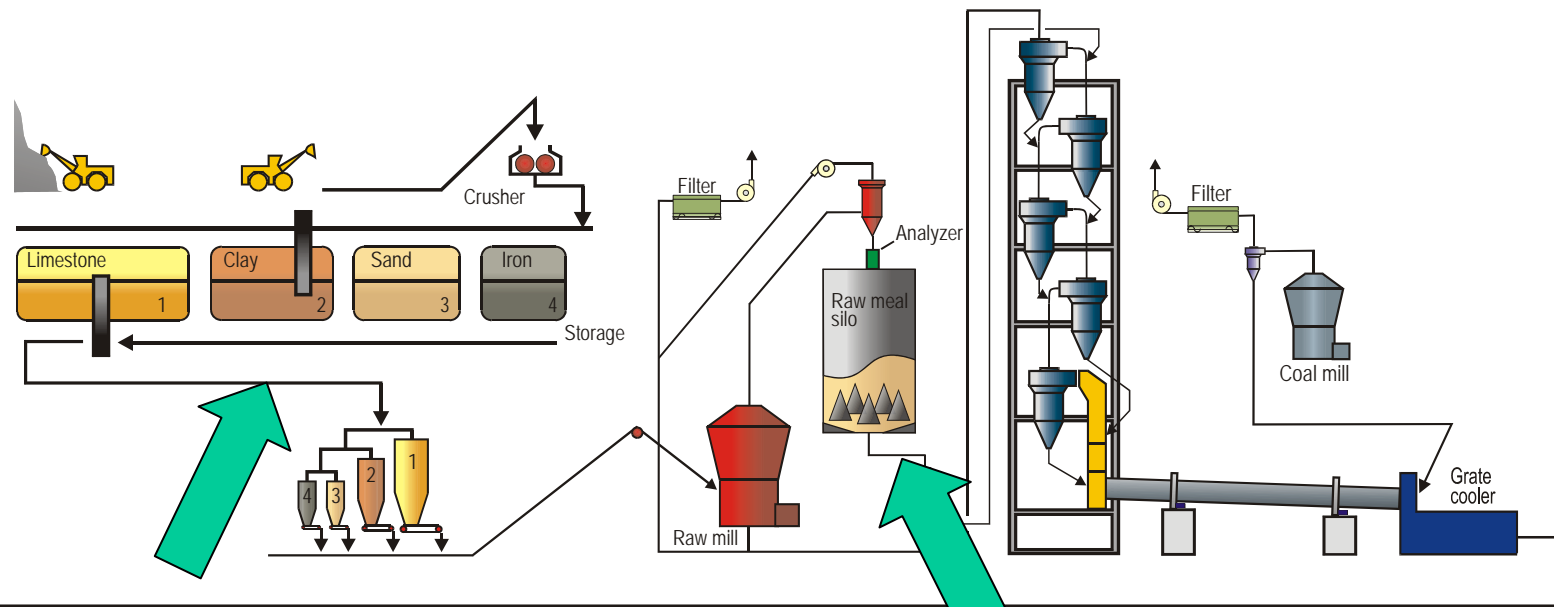


Longitudinal raw material store

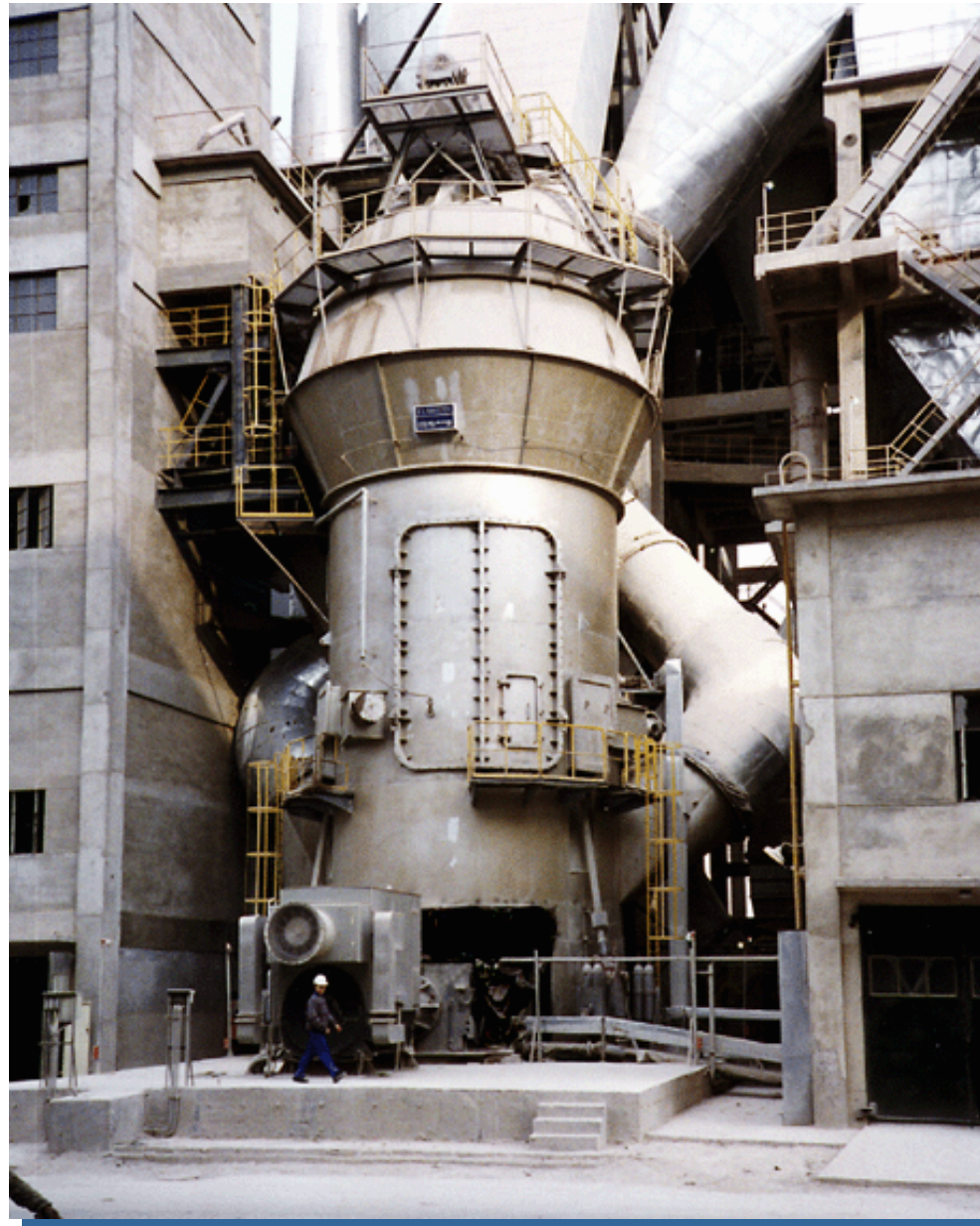


Raw material handling & storage





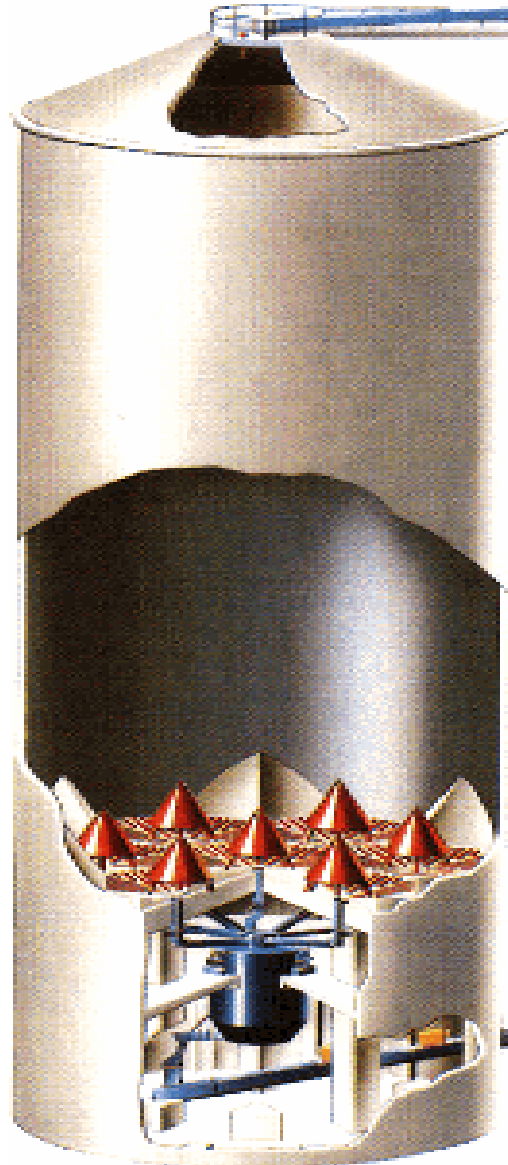
ATOX Raw Mill

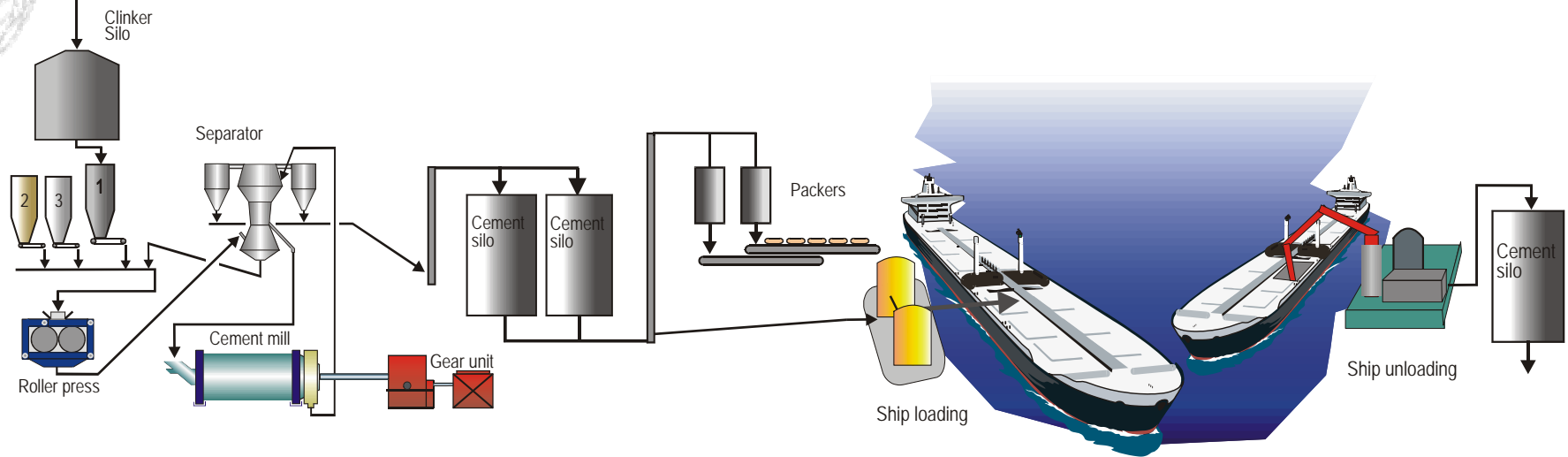
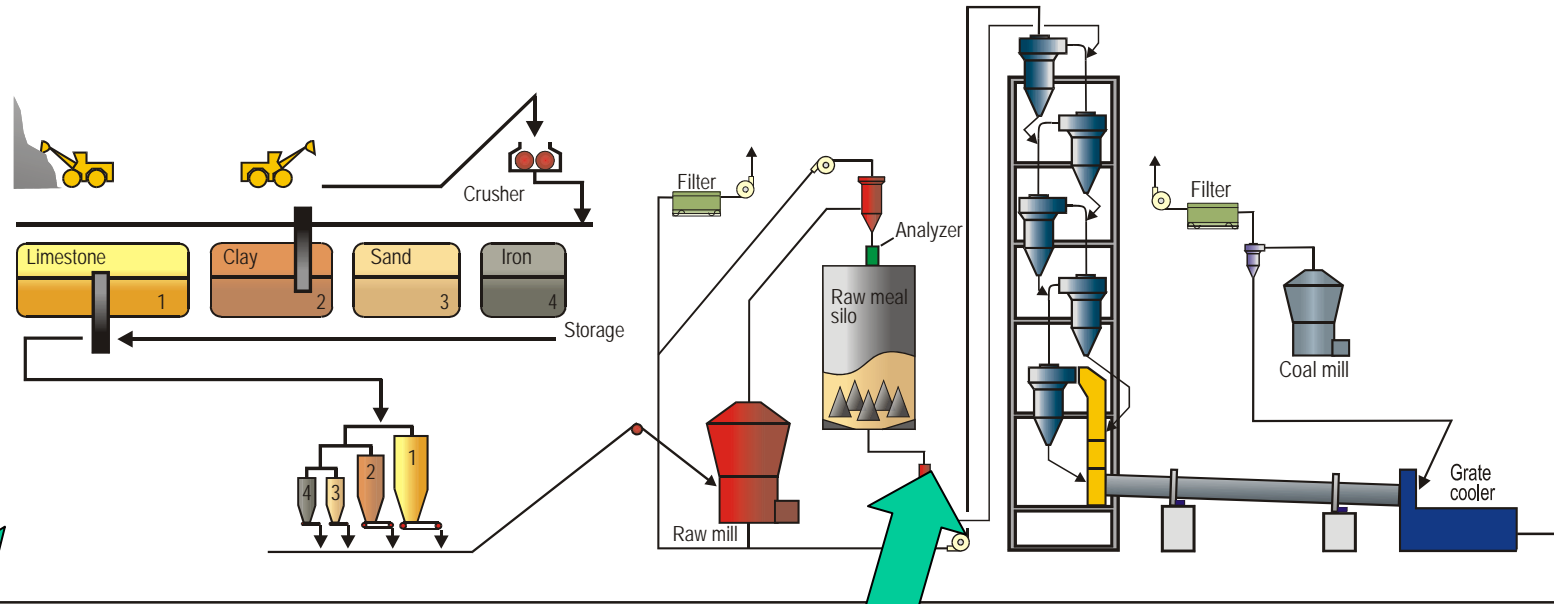


Robo laboratory

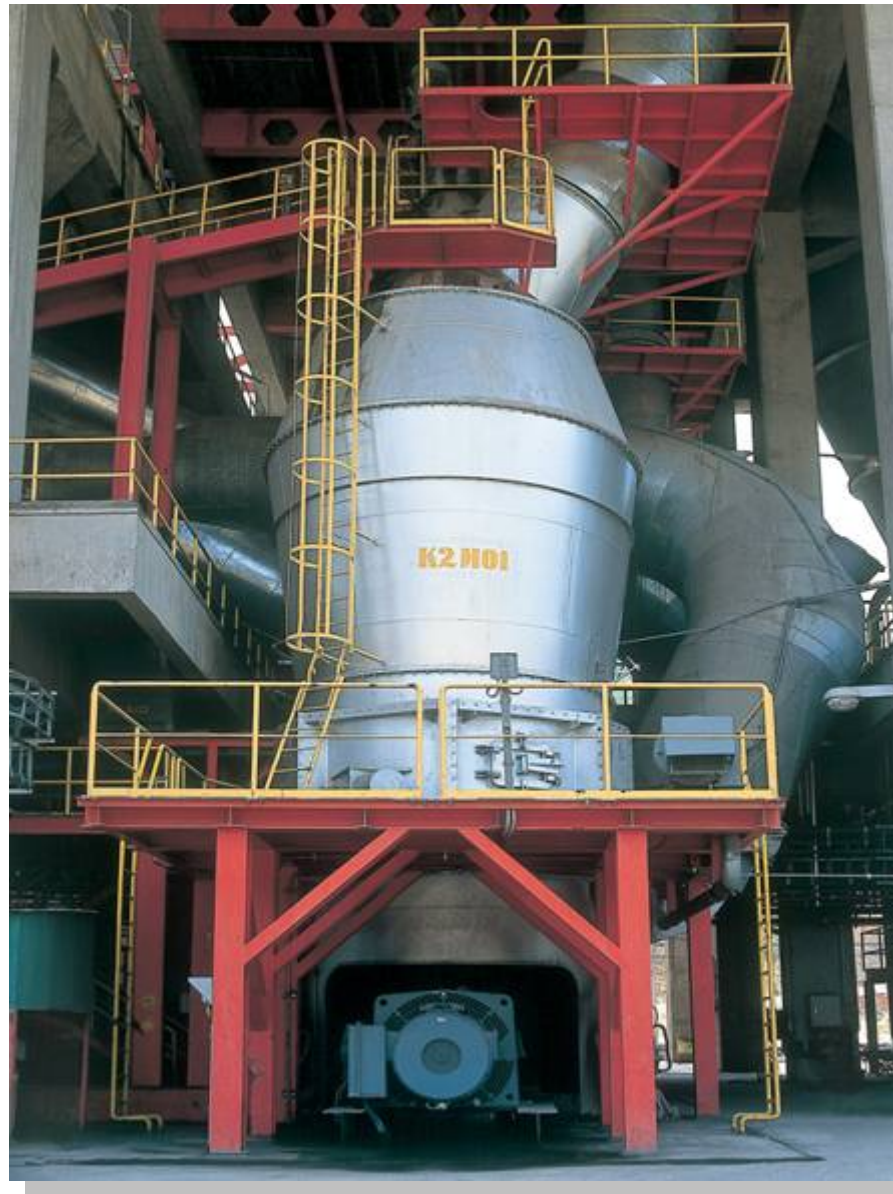


Blending and storage silo, CF





ATOX coal mill



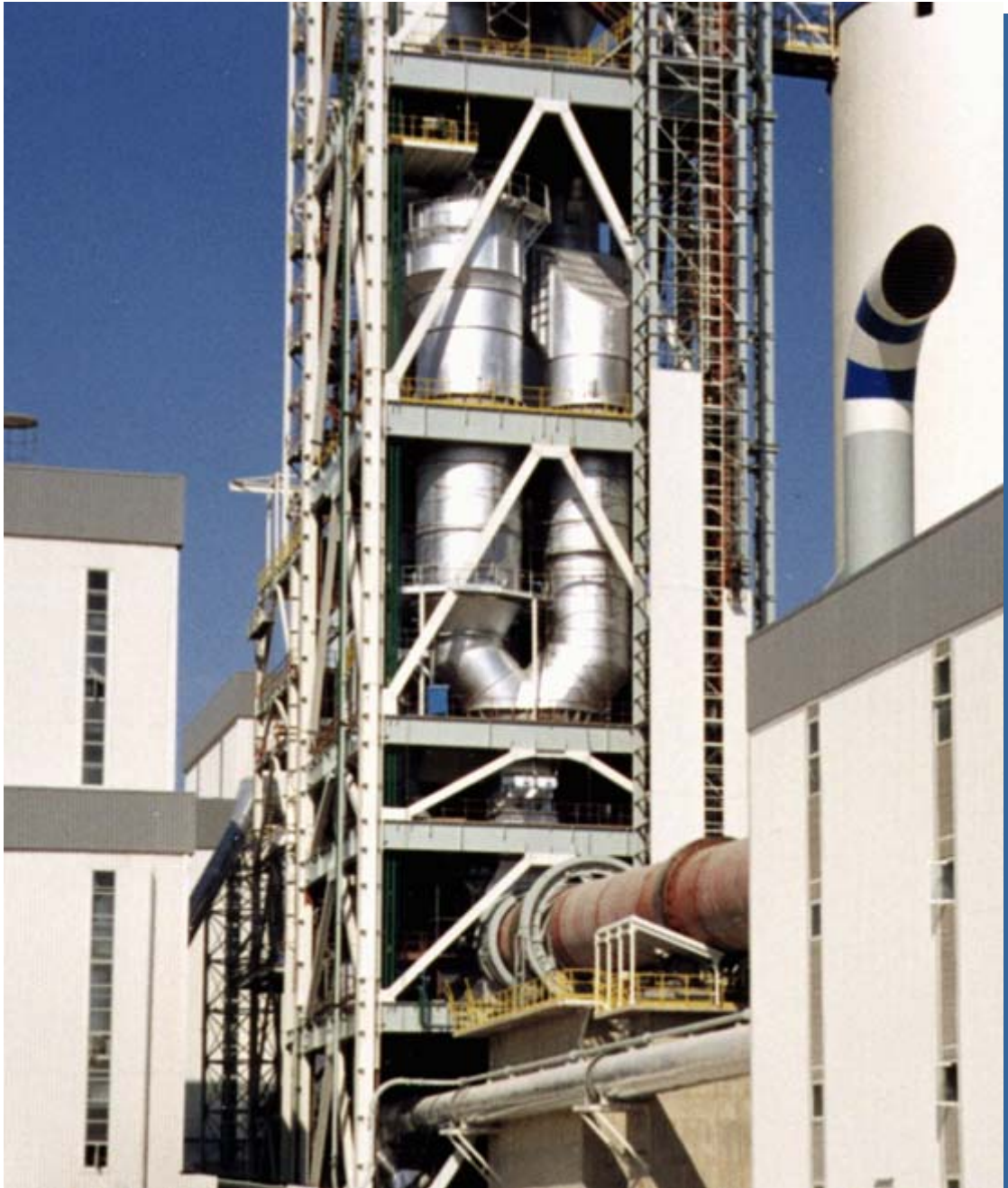
DRW Rotor Weigh Feeder



Anti pollution equipment



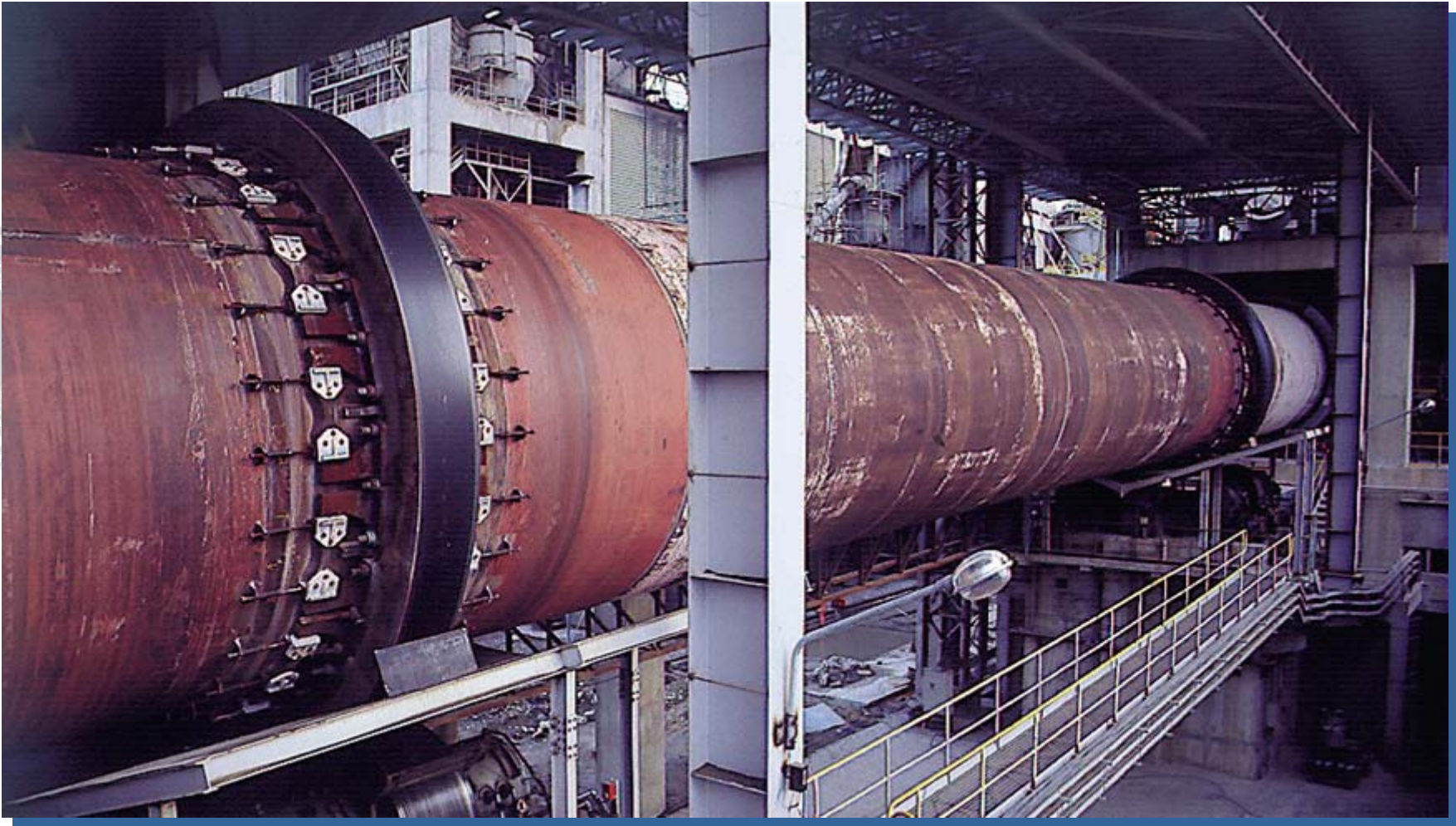
SLC-D



Cimsa Mersin, Turkey

FLSMIDTH

The Rotax-2 rotary kiln



Kiln hood



Control room

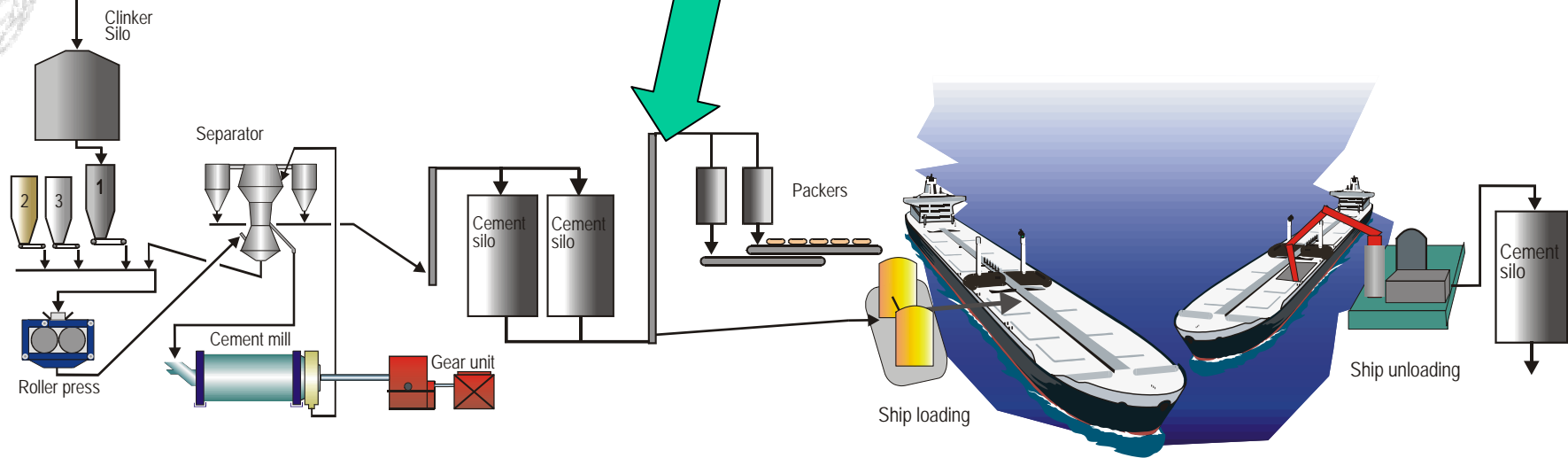
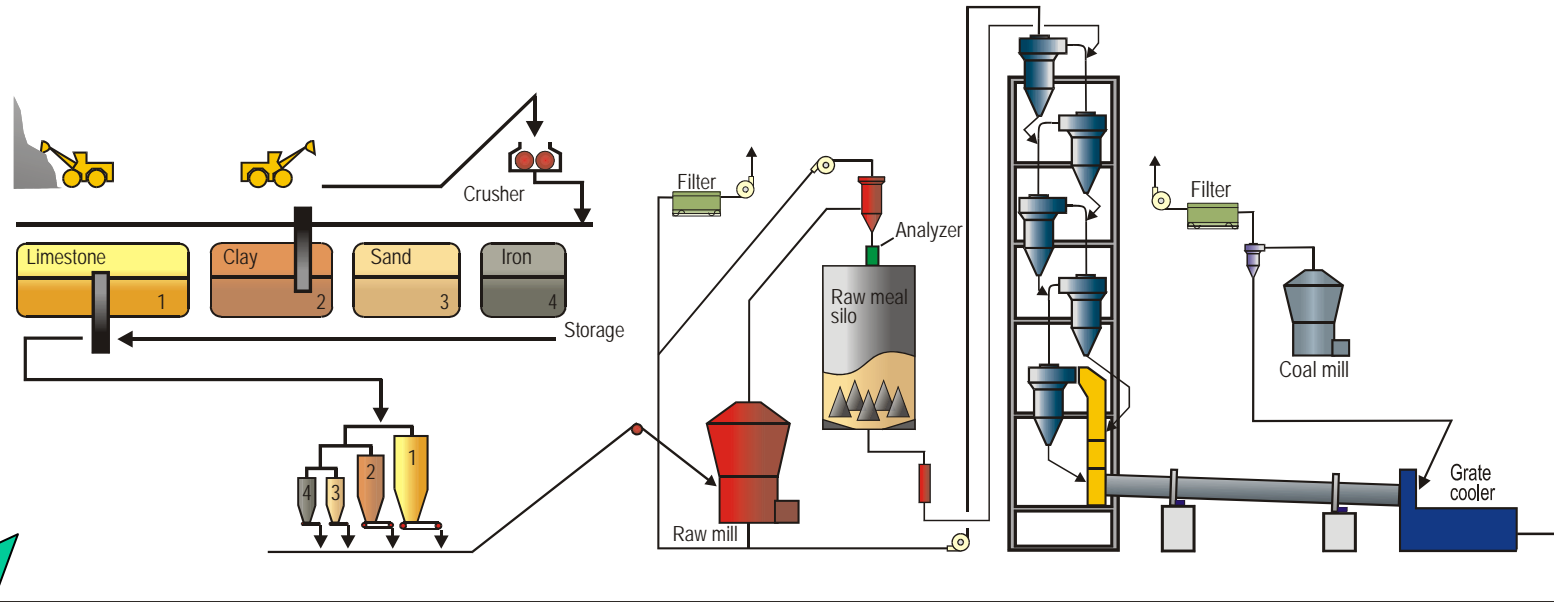


SF - CROSS BAR COOLER



SF - CROSS BAR COOLER



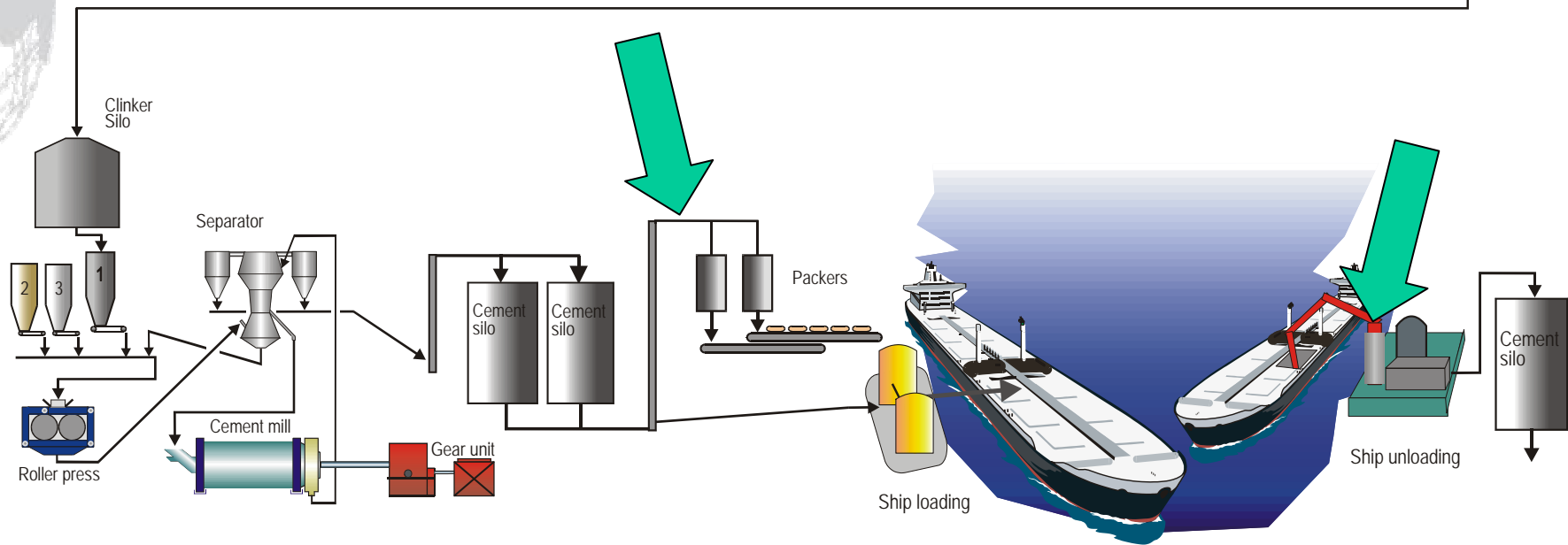
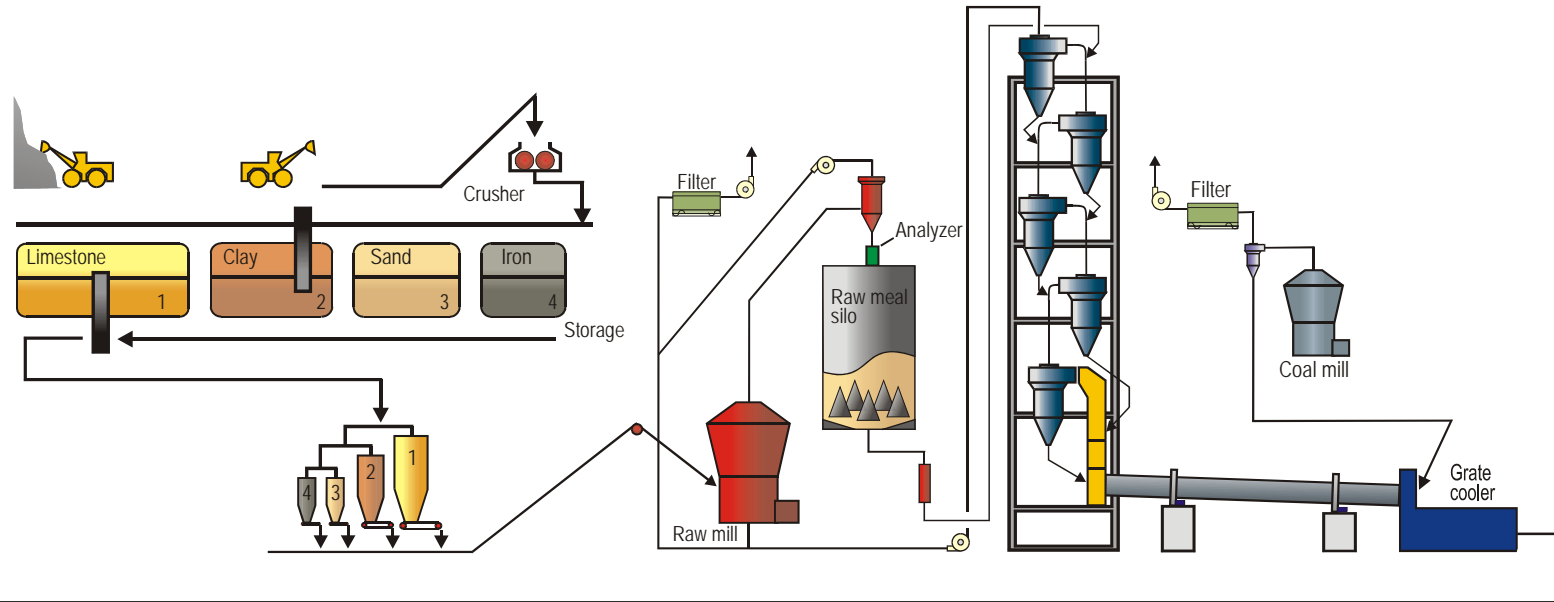


UMS Ball Mill



OK vertical roller mill





Packing equipment



Cement packing

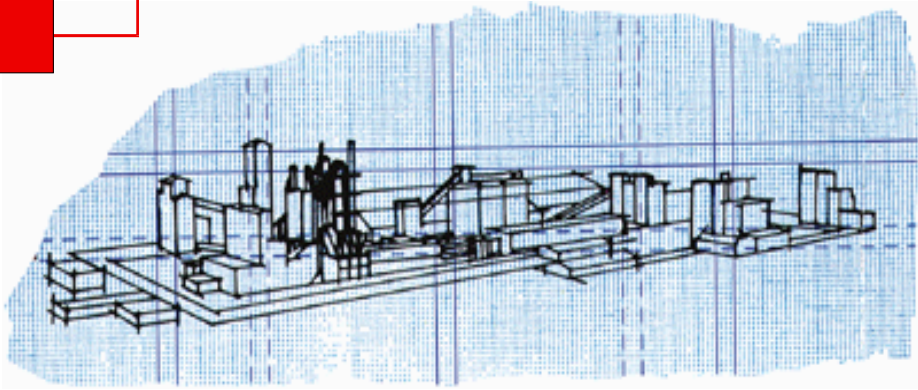


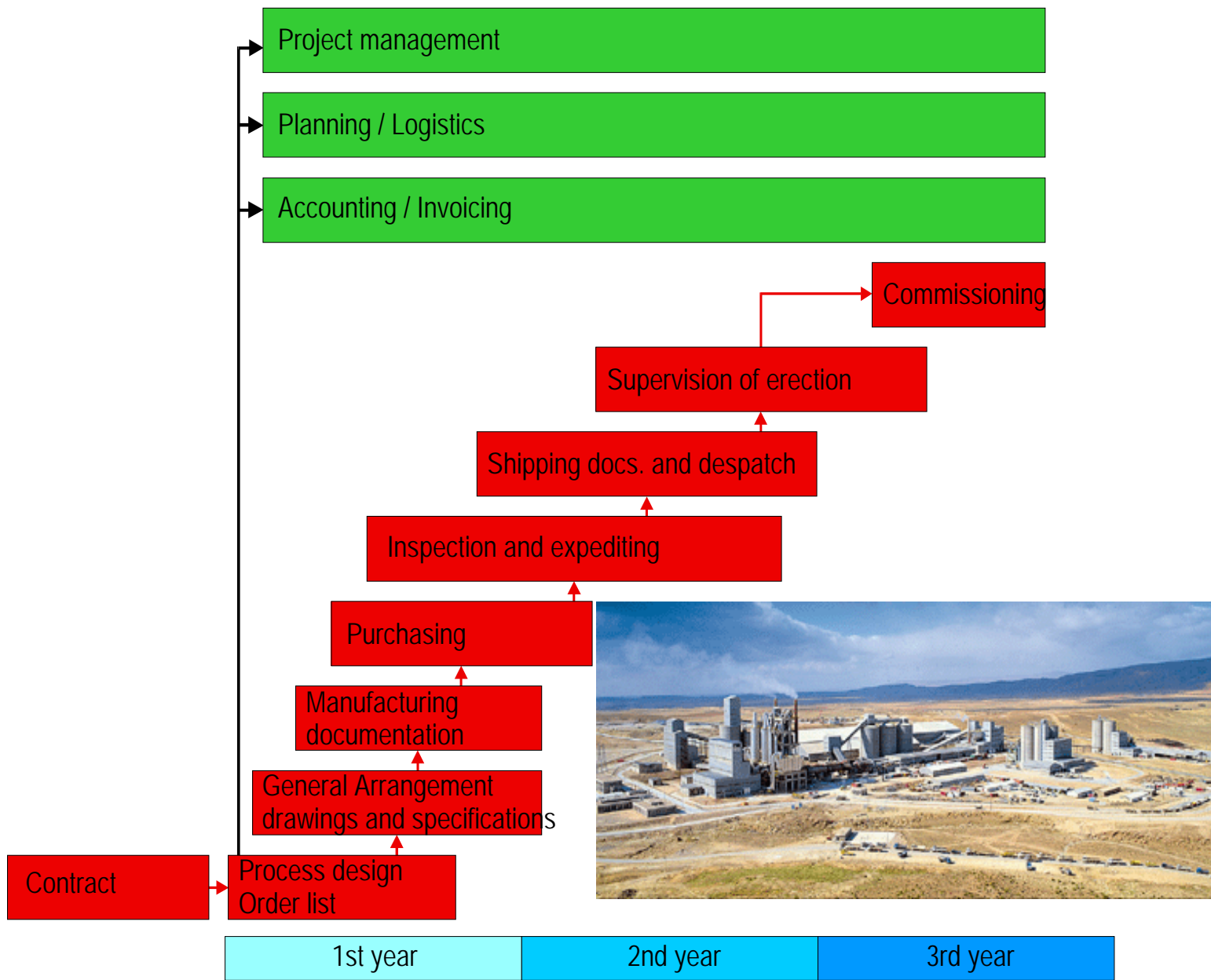
Pneumatic ship unloader





Enquiry/
Tender
documents





2 x 5,000 tpd Plant

Mechanical Equipment	27.510	ton
Electrical Equipment	2.830	ton

Turnkey Activities

- Site levelling	25.000	m3
- internal roads and squares	127.000	m2
- excavation	150.000	m3
- concrete	140.000	m3
- formwork	310.000	m2
- reinforcement	17.000	ton
- Structural steel		
- buildings	9.000	ton
- storages	1.500	ton
- conveyor bridges	2.400	ton
- other	3.800	ton
- Cladding steel	72.000	m2
- Masonry walls	13.000	m2

Cost-distribution for a Cement Plant

	Typical	UK	Egypt	Algeria	Indonesia
1 Machinery & Equipment	40	36	49	26	42
2 Shipping	2	2	1	5	9
3 Civil Works incl. Steel Structures	35	38	30	47	29
4 M+E Erection Works	15	20	10	11	12
5 Supervision/Site Expenses	5	4	5	10	3
6 Miscellaneous	3	0	5	1	5
Total	100	100	100	100	100

Total Installed Cost

(Country specific)

