

Product datasheet

FerroComb™ Wear Panels

Low cost, durable, full metallic wear panels

FerroComb impact panels offer improved wear protection, at lower cost, in moderate impact and high abrasive wear conditions.

Increased wear life: improved metallurgy, a unique matrix design, and liner stacking feature ensure FerroComb panels deliver improved wear performance.

Lower cost: non-composite construction lowers the cost of FerroComb impact panels compared to common composite liners, without reducing performance than the heavier panels they replace. Only standard hand tools required!

Easier and safer installation: the low weight and compact shape of FerroComb panels makes them much safer and simpler to handle and install.

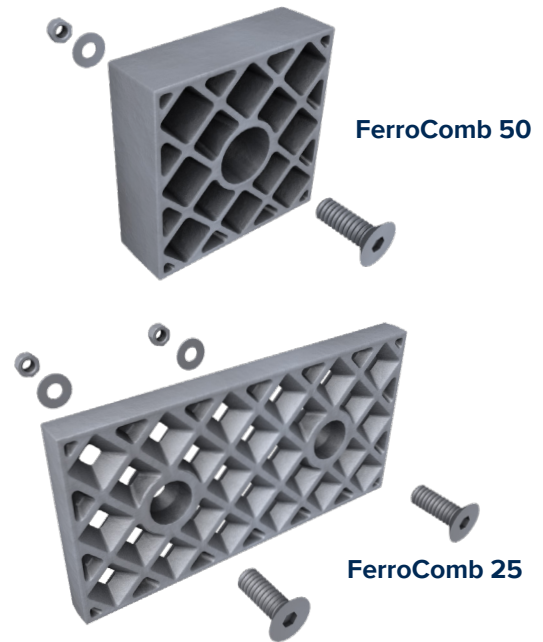
Improved sustainability: FerroComb panels are made using up to 84% recycled metals and 67% renewable energy. There is also less material wastage at end-of-life due to the distinctive matrix design.

A unique design

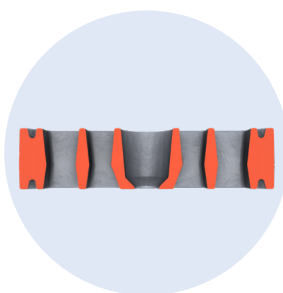
FerroComb panels are cast in optimized white iron and feature a unique matrix design. This design keeps the weight low during handling and installation, but facilitates the formation of an autogenous wear layer during operation. This provides additional wear protection and – in certain applications – also prevents feed material degradation.

Two design options are available. **FerroComb 50** requires a single set of fastener per panel and allows stacking of the panels up to three deep. This extends uptime and allows the creation of stone boxes and deflectors for better material flow and distribution. Stacking is achieved using custom-made adapters and longer fastener sets. When stacked, the bottom panel is held firm, while the top one is worn.

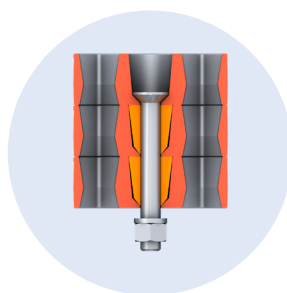
FerroComb 25 panels are twice the width and half the depth of FerroComb 50 panels for fast coverage of larger areas. These panels require two sets of fasteners.



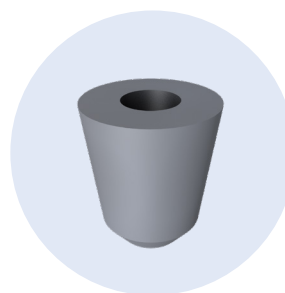
Characteristics	FerroComb 50	FerroComb 25
Dimensions	150 x 150 x 50mm	300 x 150 x 25mm
Weight per panel	5 kgs	5.6 kgs
Panels per square meter	45	23
Mounting method	1 x M20 CSK Screw, Nut & Washer	2 x M16 CSK Screw, Nut & Washer
Material	Optimized White Iron	Optimized White Iron
Temperature limits	+300°C -40°C	+300°C -40°C
Liner Stacking	Yes	No
Application	-100 mm	-100 mm



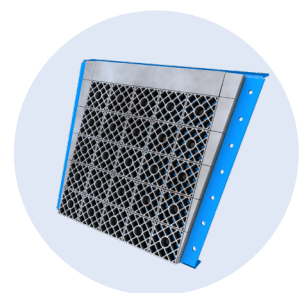
Matrix Design
(Cross-section)



Liner Stacking



Adapter for Stacking



Panel Layout
(Modular Chute)

FLSmidth A/S
2500 Valby
Denmark
Tel. +45 3618 1000
info@flsmidth.com

www.flsmidth.com

FLSmidth Inc.
Salt Lake City Operations
Midvale, UT 84047
USA
Tel. +1 801 871 7000
info.slcc@flsmidth.com

FLSmidth Private Limited
FLSmidth House, 34, Egatoor,
Kelambakkam,
Rajiv Gandhi Salai,
Chennai, Tamilnadu - 603 103,
India
Tel. +91 44 4748 1000
flsm-in@flsmidth.com
indiainfo@flsmidth.com

Copyright © 2023 FLSmidth A/S. All Rights Reserved. FLSmidth and FLS are (registered) trademarks of FLSmidth A/S. This brochure makes no offers, representations or warranties of any kind (express or implied), and information and data contained in this brochure are for general reference only and may change at any time. FLSmidth does not guarantee or make any representation regarding the use or the results of the information or the data provided in the brochure in terms of its correctness, accuracy, reliability or otherwise, and shall not be liable for any loss or damage of any kind incurred as a result of the use of the information or data provided in the brochure.