

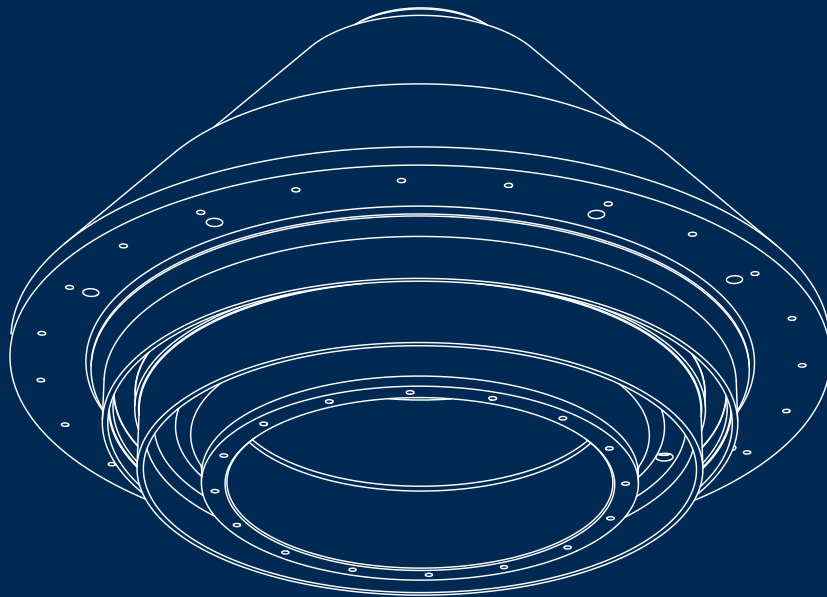
# EXCEL™ replacement parts for MP® Cone Crushers Reliable high quality parts



**FLS**

# Improve performance with EXCEL™ spare parts for MP® aggregate rock crushers

Discover the difference our re-engineered spare wear parts can make in your existing crusher to increase performance and decrease maintenance.



## Benefits

- Increase durability
- Increase longevity
- Consistent high quality
- Reduce maintenance and downtime

# Extraordinary components do not happen by accident

EXCEL™ bronze bushings and components perform better because our standards are higher.

## Higher tensile strength

Tin is the most expensive ingredient in the metallurgy of bronze alloys, but it creates tougher bushings that last longer. We use the maximum percentage of tin to increase your profits. We certify our crusher bronze to the top end of the CDA specification for tin.

## Uniform lead distribution

During casting, we use an innovative technique that distributes lead and other alloy grains uniformly. We then use a unique chilling process that ensures the uniform distribution is locked in. Our dedication to lead distribution means that when you use EXCEL™ cast alloys, there is less friction and more defense against heat build-up. In short, our bushings and other cast parts last longer and have fewer problems.



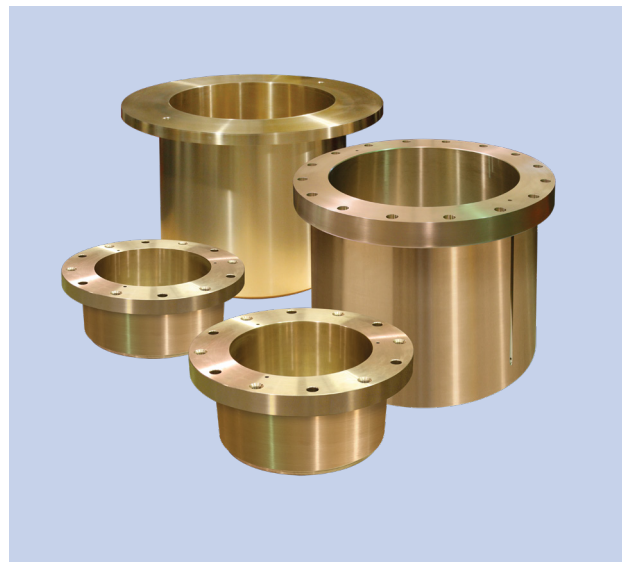
Standard bronze pour from furnace to ladle in our foundry for EXCEL parts, located in Pekin, Illinois, USA

## Optimum concentricity

Our competitors are content with bushings that are close enough to concentric. We create perfectly concentric bushings using a unique pinch turning method during machining and cut the inside and outside diameters simultaneously. This process guarantees that your bushings are concentric with no weak spots or deformities and lowers the risk of hot spots.

## Porosity-free/uniform grain structure

We begin preparing for casting by selecting the highest grade pure raw materials. The unique centrifugal casting technique that we use produces a tighter, denser grain structure in the alloy and eliminates nearly all gas pockets. What does this mean to you? The cast alloys you buy from us last longer and have significantly fewer defects.



XL40 bronze components

# MP<sup>®</sup> series cone crushers

MP800<sup>™</sup>, MP1000<sup>™</sup>, MP1250<sup>™</sup>

## Component identification

### Bowl assembly

Hopper Assembly

Adjustment Cap

Bowl

Drive Ring

### Adjustment ring assembly

Dust Shell Seal

Dust Shell

Clamp Ring

Clamping Cylinder

Adjustment Ring

Tramp Release Cylinder

### Head assembly

Pin

Head Ball

Head

Upper Head Bushing

T-Seal

Lower Head Bushing

### Mainframe assembly

Mainframe Liner

Stationary Guard

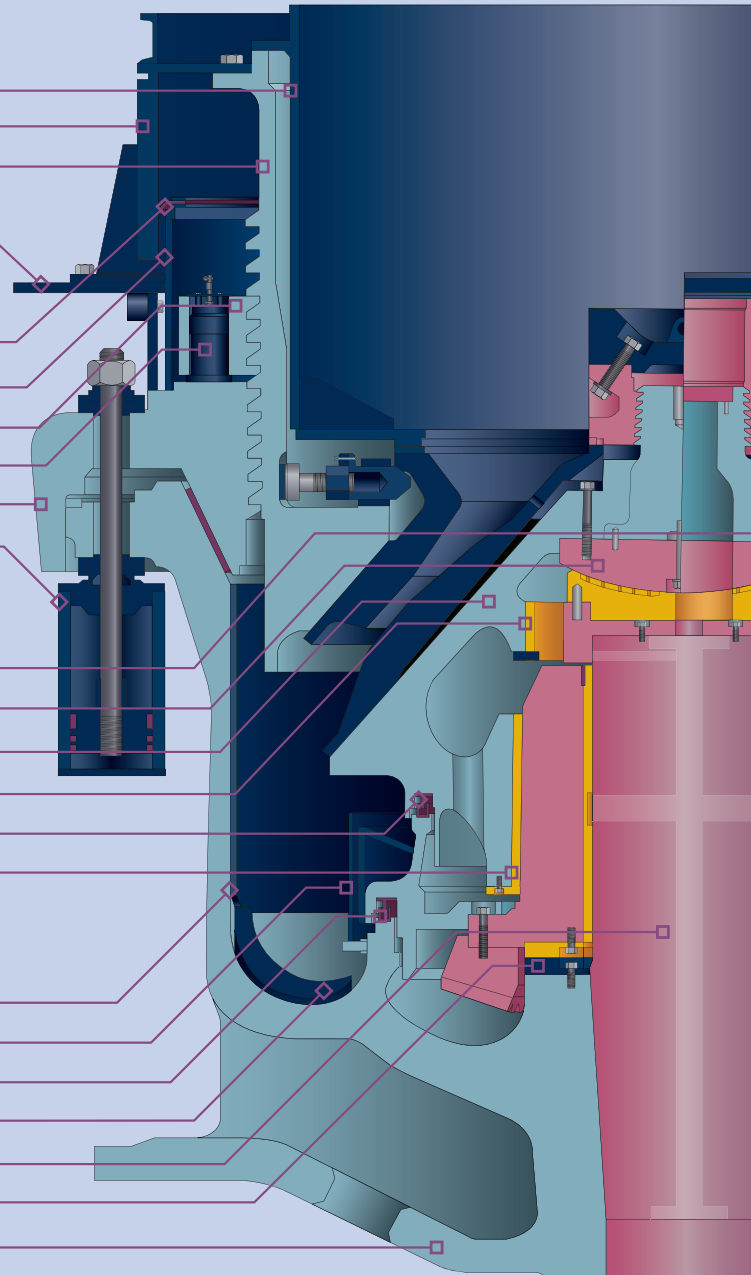
U-Seal

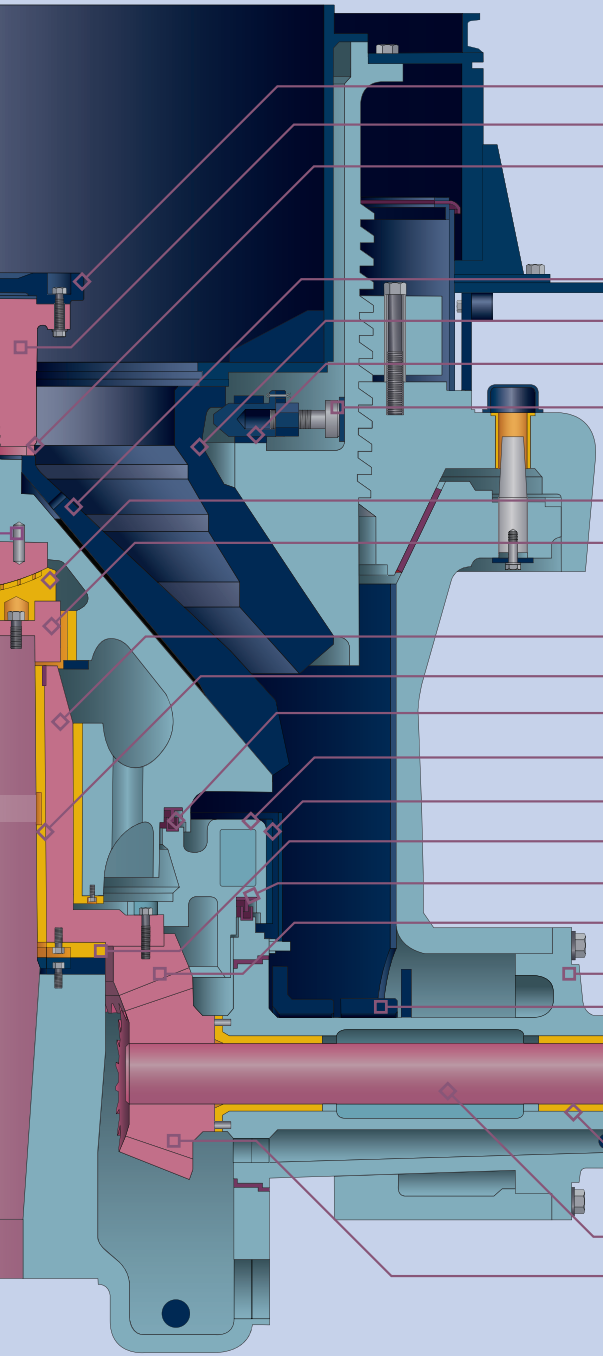
Arm Guard

Mainshaft

Thrust Washer

Mainframe





**Feed plate assembly**

- Feed Plate
- Locking Nut
- Torch Ring

**Liner & hopper components**

- Mantle
- Bowl Liner
- Bowl Adapter Ring
- Hardware

**Socket assembly**

- Socket Liner
- Socket

**Eccentric assembly**

- Eccentric
- Eccentric Bushing
- U-Seal
- Counterweight
- Counterweight Guard
- Thrust Bearing
- T-Seal
- Gear

**Countershaft assembly**

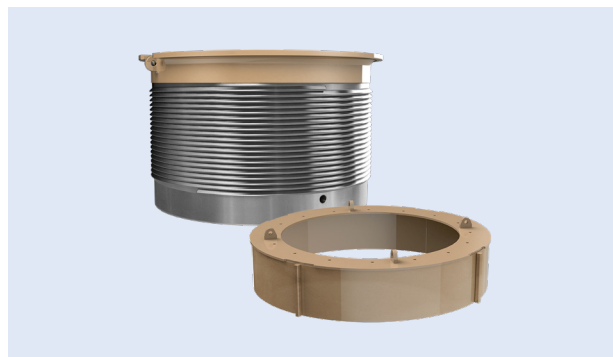
- Countershaft Box
- Countershaft Box Guard
- Flinger Housing
- Oil Flinger
- Countershaft Bushing
- Countershaft
- Pinion

# Invest in the right spare parts for your cone crusher

These improved parts provide better throughput and increased revenue for your business. Better replacement parts mean longer periods of operation between maintenance downtimes.



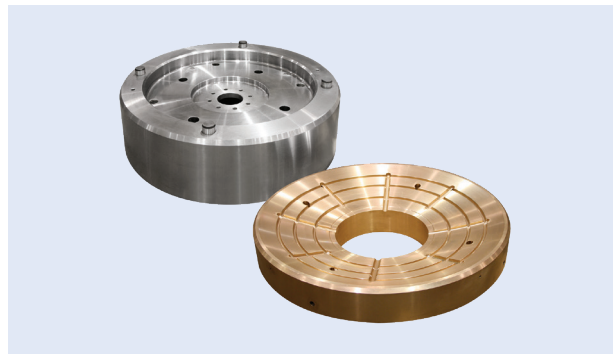
Mainframe assembly



Bowl assembly



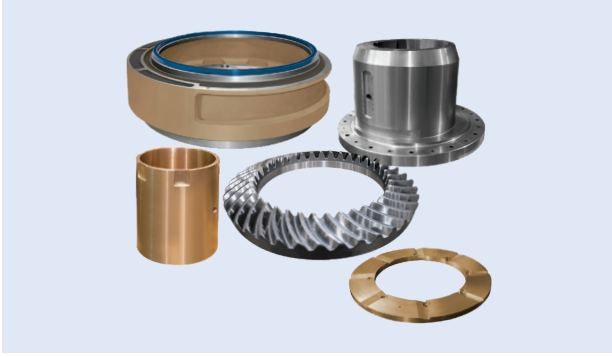
Countershaft assembly



Socket assembly



Hydraulic components



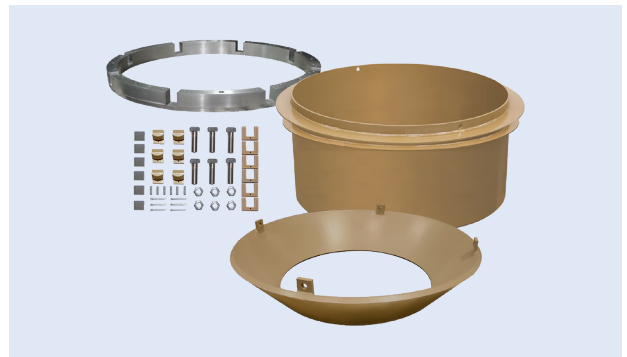
Eccentric assembly



Head assembly



Feed plate assembly



Hopper assembly

### Component assemblies produced for MP® Cone Crushers

- Bowl
- Countershaft
- Eccentric
- Feed plate
- Head
- Hydraulic
- Feed plate
- Head
- Hydraulic

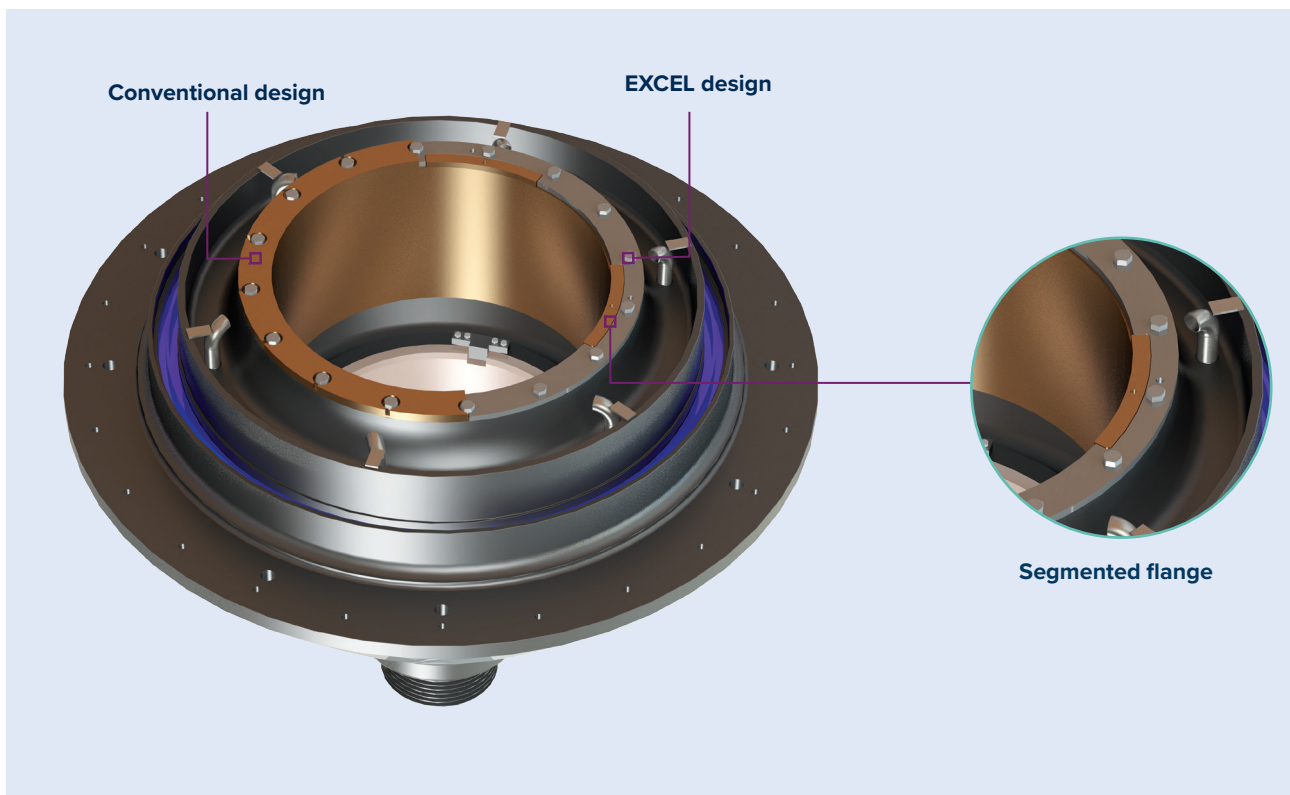
Metso® and MP™ are trademarks of Metso Minerals Industries, Inc. or its affiliates. FLSmidth/FLS is not an authorized repair facility nor does it have an affiliation with Metso. These terms are used for identification purposes only and are not intended to indicate affiliation with or approval by Metso or FLSmidth/FLS. All parts are manufactured by, for and warranted by FLSmidth Inc. – Pekin Operations and are not manufactured by, purchased from or warranted by the original equipment manufacturer.

# Lower head bushing retention system

Halt the downward migration that is commonly found with conventional head designs.

Bushing migration happens when a retention cap screw fails or the flange of the lower head bushing breaks. Our lower head bushing retention system eliminates bushing migration.

A steel retainer ring at the bottom of the head stops the bushing from moving downward and rotating in the bore. Segmented flanges on the lower head bushing correspond to the locking features in the steel retaining ring. Partial-thread cap screws allow a section without thread in the shear zone where the head and steel retainer ring meet.







"Our customers need replacement parts that operate in harsh environments. For this reason, we demand metallurgically sound castings produced through the careful control of chemistry and processing parameters for our replacement parts. Our promise is to provide our customers with the highest quality components."

**MIKE BERGERHOUSE**  
Senior Metallurgical Engineer  
FLSmidth Inc. - Pekin Operations

# We provide top-quality spare parts to keep your business running

Don't accept anything less than the high quality that we provide.

## Quality redefined

We know that your success depends on our quality control so we dedicate more time and people to our inspections than any of our competitors. From our strict metallurgical standards and precision machining processes to our exacting inspections, our quality assurance protocols align our processes to produce quality and dependable results. We are ISO 9001 certified, and our program is managed here along with our traceability and record retention. Our procedures allow us to trace any part that we produce, even years later. For each part, we can confirm any possible production details that are needed.

## High-value spare part solutions to repair and optimise your cone and rock crushers

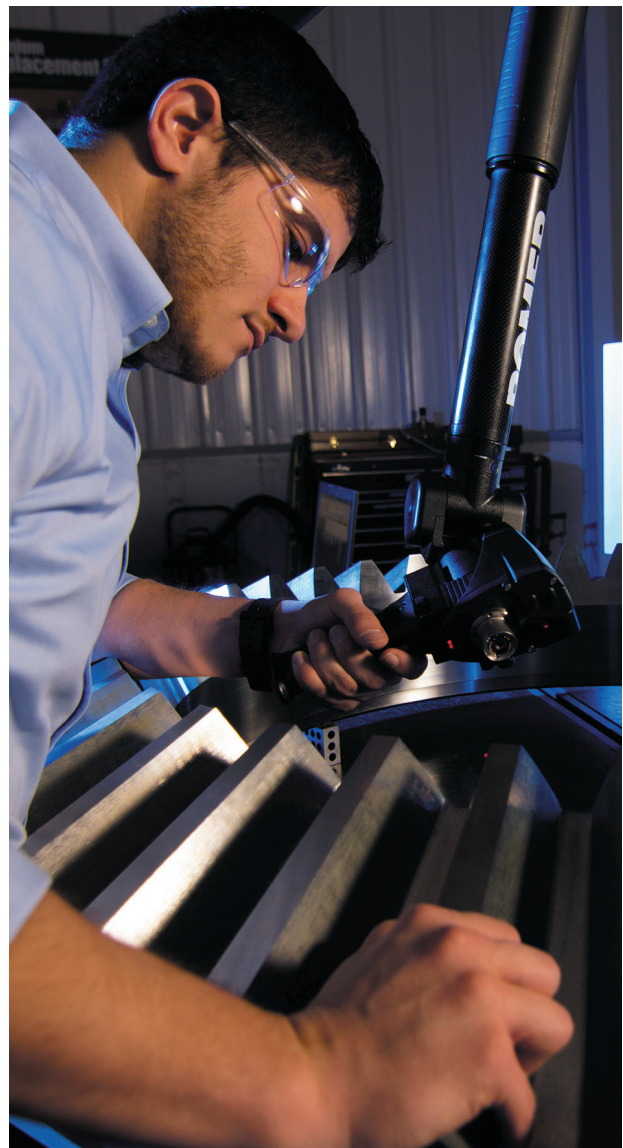
Our top-quality, reliable spare parts won't break the bank. Our spare parts offer durability and dependability, along with top value.

## Consistent and reliable precision gears

The contact pattern is the most important feature of crusher gears and pinions. Our manufacturing expertise and attention to quality creates gears with better field performance and longer wear life. We keep a high-quality set of master gears, and every gear and pinion that we produce is contact-tested against the master. No gear leaves our foundry unless it meets our exacting contact specifications.

## Enhanced performance

Let your part replacement improve your existing aggregate or rock crusher by using our high quality EXCEL replacement parts. Our parts provide better, more efficient performance to keep your business going strong.



"Our goal is to give our customers the greatest possible usage out of their equipment with high quality replacement components. Many customers see replacement parts as big hunks of steel and assume that they will function under abuse and any circumstance. We see our parts as precisely honed instruments that can be optimized for better performance and longevity."

**BRADEN PRICE**

Design Engineer, Product Design & Enhancement  
FLSmith Inc. - Pekin Operations



**Follow us here**



[flsmidth.com/linkedin](https://flsmidth.com/linkedin)



[flsmidth.com/twitter](https://flsmidth.com/twitter)



[flsmidth.com/facebook](https://flsmidth.com/facebook)



[flsmidth.com/instagram](https://flsmidth.com/instagram)



[flsmidth.com/youtube](https://flsmidth.com/youtube)

**Contact us**

**FLSmidth A/S**

2500 Valby  
Denmark  
Tel. +45 36 18 10 00  
[info@flsmidth.com](mailto:info@flsmidth.com)

**FLSmidth Inc.**

Pekin Operations  
Pekin, IL 61555  
USA  
Tel +1 309 347 3031  
[excelparts@flsmidth.com](mailto:excelparts@flsmidth.com)



[flsmidth.eco/contact](https://flsmidth.eco/contact)

Copyright © 2023 FLSmidth A/S.  
All Rights Reserved. FLSmidth and FLS are (registered) trademarks of FLSmidth A/S. This brochure makes no offers, representations or warranties of any kind (express or implied), and information and data contained in this brochure are for general reference only and may change at any time. FLSmidth does not guarantee or make any representation regarding the use or the results of the information or the data provided in the brochure in terms of its correctness, accuracy, reliability or otherwise, and shall not be liable for any loss or damage of any kind incurred as a result of the use of the information or data provided in the brochure.