

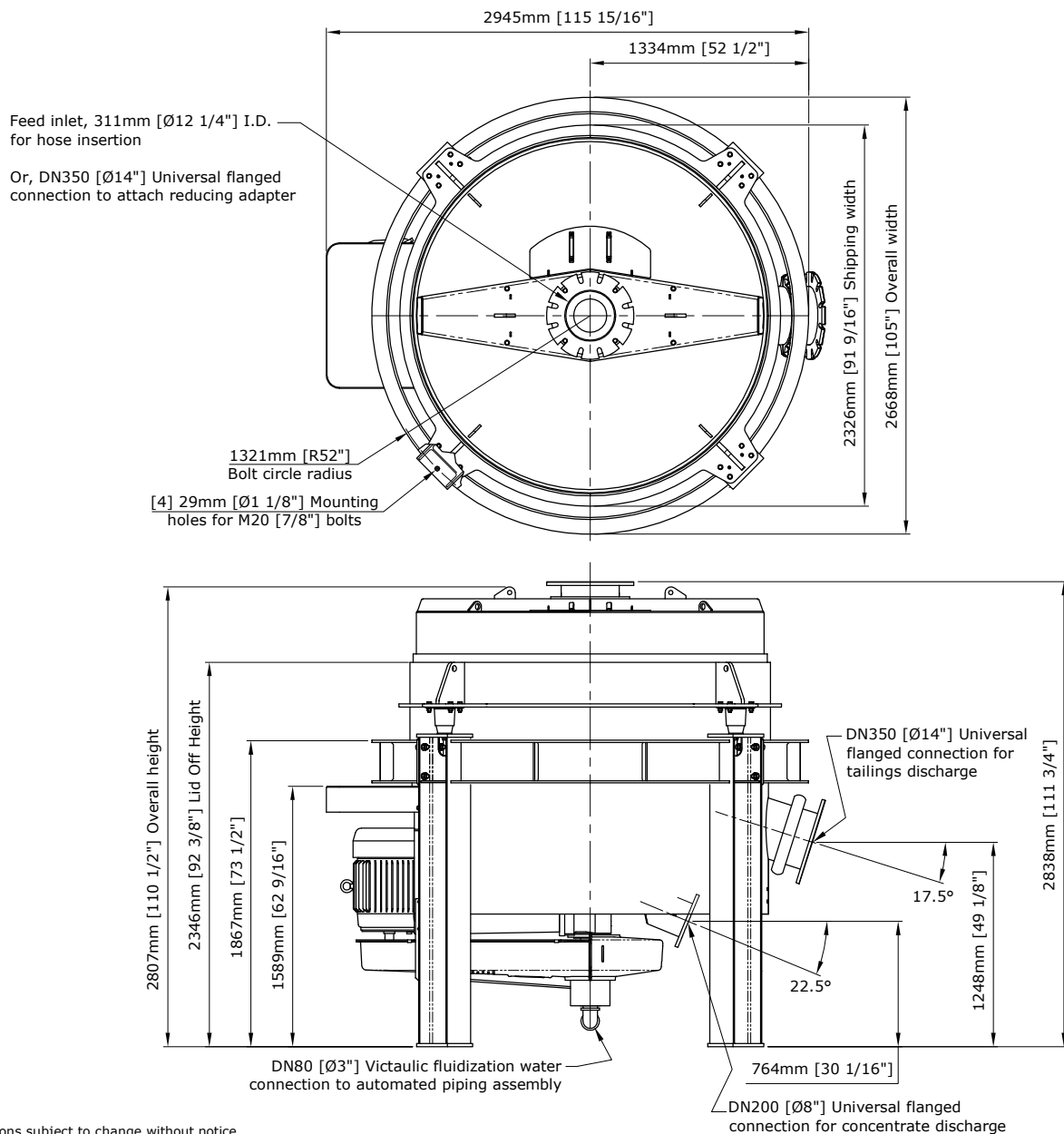


FLSmith Ltd.
 PO Box 10025, 650-700 West Georgia St.
 Vancouver • British Columbia • Canada • V7Y 1A1
 Tel +1 604 888 4015 • Fax +1 604 888 4013
 Email: knelson@flsmith.com • www.flsmith.com

**Knelson Concentrator Model
 KC-QS48
 Specification Sheet**

Maximum Feed Capacity	- 400 tonnes/hr Solids
Maximum Total Volumetric Throughput	- 545 m ³ /hr [2400 USgpm]
Feed Topsize Size	- Maximum: 6mm; Recommended: 2mm
Feed Density	- Up to 75% Solids by Weight
Max. Fluidization Water Pressure	- 550 kPa [80 psi]
Minimum Air Flow Required (Auto Piping Only)	- 150 L _w /min [5.3 scfm] @ 600 kPa [90 psi]
Concentrator Installation Weight	- 5320 kg [11700 lbs] (Not Including Piping)
Motor	- 45 - 75 kW [60 - 100 hp] - Electric

Cone Style	Fluidization Water m ³ /hr [USgpm]	Concentrate Weight kg [lb]	Recommended G-Force Operation [G]	Recommended Application
G5	41 [180] - 52 [230]	34 [75] - 48 [106]	60	Fine to coarse target minerals
G6	52 [230] - 76 [335]	59 [130] - 82 [180]	60 - 120	Fine to coarse target minerals
G7	38 [167] - 61 [270]	65 [144] - 107 [235]	60 - 200	Fine and ultra-fine target minerals



Note:
 - Specifications subject to change without notice.
 - All piping to concentrator to be flexible to allow for slight oscillation of unit during operation.
 - Consult FLSmidth for more detailed operating parameters for your specific application.